

# Samoens



@samoens\_official #samoens

[www.samoens.com](http://www.samoens.com)

**TOURISTIC GUIDE**



summer

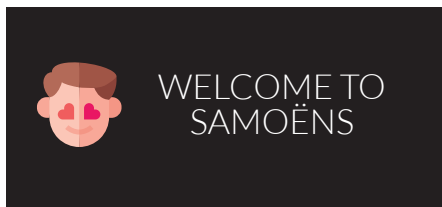


## OUR WELCOME

**Our quality Approach :**  
Tourist Office was awarded national "Qualité Tourisme™" accreditation in accordance with the quality-based approach taken by tourist offices in France.

**Our quality undertakings :**  
Provide a courteous and efficient welcome. Be available and attentive to expectations.  
Provide personalized advice concerning local tourist features.  
Provide updated and precise information.  
Measure satisfaction through visitors surveys.  
Be attentive to visitors remarks and suggestions and take them on board.

**Strive continuously to improve our services.**



## OUR VALUES



## OUR CHARM ASSETS

**650 kms of marked trails at the heart of a rich and wild nature, offer a variety of outings, from family walks to sporting activities for one or more days.**

As you discover the Giffre mountains, you will find them to be a veritable hiking paradise. In turn, the hiker crosses charming villages, forests of beech and fir trees or mountain pastures, he follows impetuous torrents or discovers high altitude lakes, he overhangs impressive cliffs or enjoys the spray of a waterfall.

The various infrastructures set up for the winter (cable cars, chair lifts) allow the hiker (on foot or by bike) to easily reach the first promontories overlooking the valley. Long-distance hikes, from refuge to refuge, allow you to explore the emblematic summits: the Dents Blanches, the Ruan or the Fiz chain.

The new Tour du Giffre offers a discovery of the whole valley and its refuges. Comfortable, equipped, offering food and lodging, some are accessible through a simple family walk, while others are reserved for experienced hikers. But the wardens are always there to welcome their guests with the warmth and friendliness that characterize mountain people!

## Summary

| 04-05  
**Village's map**

| 06-07  
**Hiking and mountain huts**  
Hiking, multi-activity, trekking, trail, mountain huts.

| 08-09  
**Hiking + Mountain bike maps**

| 10-11  
**Cycling sports**  
Mountain bike, enduro, electric bike, road bike, E-Fat scooter, onewheel.

| 12-13  
**Other mountain activities**  
Alpinism, helicopter flight, climbing, paragliding, quad, speleology, cani-kart, via cordata, via ferrata.

| 14-15  
**Water sports**  
Airboat, canoat, canyoning, hydrospeed, mini-raft, rafting, water skiing, tubing.

| 16-17  
**Cultural activities**  
Guided tours, heritage.

| 18-19  
**Family activities**  
Cultural activities, pottery, pony cycle, rosalie, pétanque and mölkky.

| 20-21  
**The leisure park**  
Tennis and beach tennis, fishing, horse riding, picnic area, swimming pool.

| 22-23-24  
**Well-being activities**  
Relaxation centres, wellness walks, massages, energy therapy and yoga practices.

| 25  
**Disability activities**  
Cimgo, all-terrain wheelchair, joëlette, electric FTT, paragliding.

| 26-35  
**Useful addresses**  
Bars, restaurants, shops, services...

| 38  
**Accommodations**  
39 Tourist hotels  
42 Tourist residences  
45 Bed and breakfast  
46 Stopover and holiday gîtes  
47 Holiday villages  
48 Holiday centres  
49 Open-air accommodations  
50 Rental residences  
53 Real estate agencies and receptive agencies  
54 Private rentals by owner

| 66  
**Summer events**

| 67  
**Come to Samoëns**

**FAMILY**  
FIND THIS EMBRACE THROUGHOUT YOUR BROCHURE, it tells you what activities are available for children of different ages.

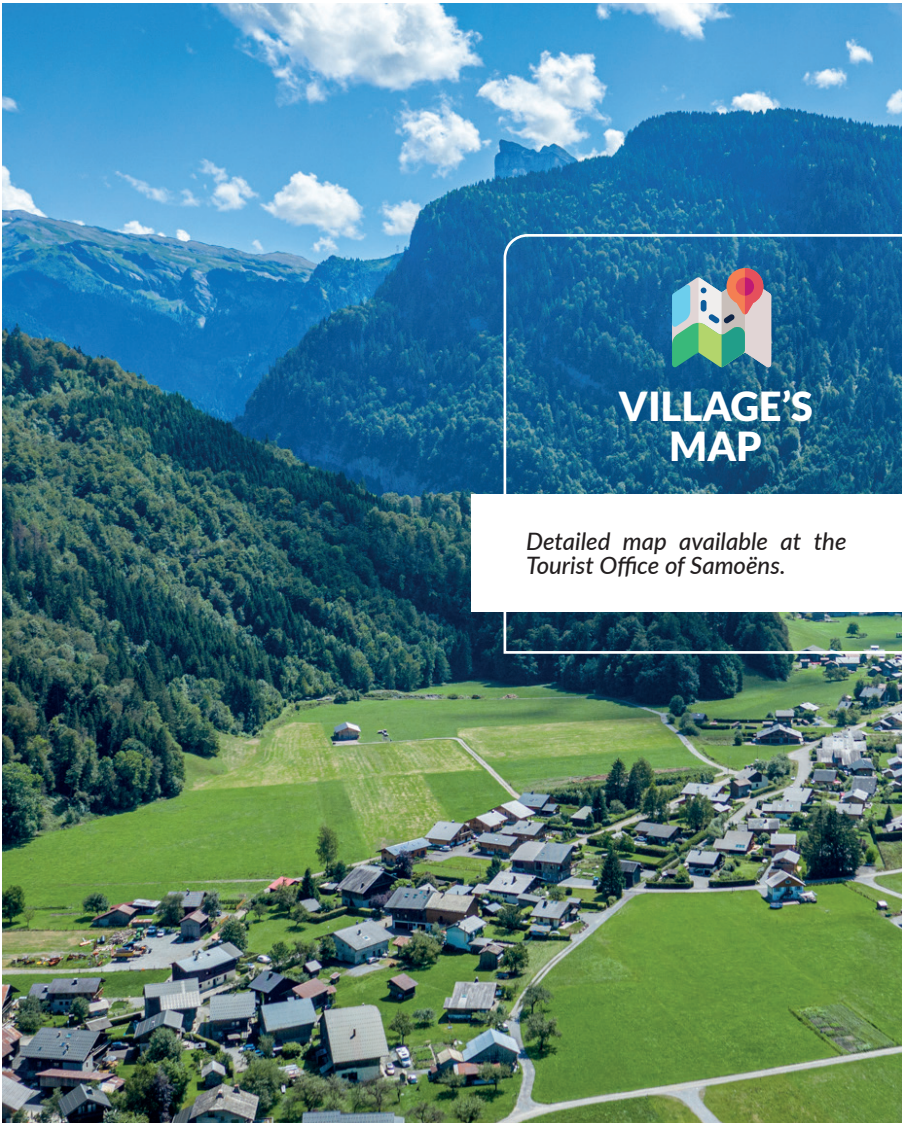


p.25

**FOR ALL**  
A guide for people with reduced mobility is available at the tourist office.

**STOP WASTE**  
Don't forget to download our brochures to reduce waste.





## VILLAGE'S MAP

Detailed map available at the Tourist Office of Samoëns.





## HIKING & MULTI-ACTIVITY WEEKS

### Mountain guide

**Pauline Prêtet**  
180 ch. de sur la ville - Les Beules  
+33 (0)6 71 14 51 19  
pauline@trekycimes.com  
www.trekycimes.com

### Bureau des guides et Accompagnateurs de Samoëns

28 place de l'Office du Tourisme  
+33 (0)4 12 01 00 44  
info@guidesmontagnes.com  
www.guidesmontagnes.com

### Ecolorado

1148 route de Sixt  
+33 (0)4 50 34 45 26  
+33 (0)6 81 68 79 46  
ecolorado.rafting@orange.fr  
www.ecoloradorafting.com

### École de Ski 360 - ESI Samoëns

25 avenue Cognacq-Jay  
+33 (0)4 50 53 38 92  
resasamoens@ecoledeski360.com  
www.ecoledeski360.com

### Le sens du Trail et de la Rando

+33 (0)6 19 52 94 65  
lesensdutrail@gmail.com

### Nunayak

50 route du Fer-à-Cheval  
+33 (0)4 50 93 86 74  
+33 (0)6 75 72 84 21  
contact@nunayak.com  
www.haute-savoie-rafting.com

### Quintessence

+33 (0)6 72 62 24 64  
philipczyk@free.fr  
www.nature-quintessence.fr

## HIKING (5years)

Discover the mountains of the Haut-Giffre valley, a real paradise! Family hikes, heritage discovery, sporty ascents, Nordic walking, and other activities, all accompanied by a specialist.

### Mountain guide

**Pauline Prêtet**

Price: on request.

### École de ski 360 - ESI Samoëns

Nature hikes: full day adults 45€ - Full day children 40€ - Half day adults 30€ - Half day children 25€.

### Bureau des guides et Accompagnateurs de Samoëns

Price: from 22€. 140€ for a half day and 240€ for a full day.

### Ecolorado

White water rafting : 190€/pers. Tour of the "Dents Blanches": from 240€/pers.

### Le sens de la Rando

Mountain raid, nature hike, sunset hike.  
Price: contact us.

### Quintessence

Price: from 25€.

### École de ski 360 - ESI Samoëns

Price: contact us.

## TREKKING (10years)

Dents Blanches tour, Mont-Blanc or further afield in Nepal, come and discover the mountains by immersing yourself for 3 to 15 days in grandiose landscapes!

### Mountain guide

**Pauline Prêtet**

Price: on request.



## MULTI-ACTIVITY (5years)

Come and discover our multi-activity courses for children and adults. Climbing, via ferrata, caving, hiking, canyoning and mountain biking.

### Bureau des guides et Accompagnateurs de Samoëns

Little Mountain Man (5-8 years), adventurer (9-12 years) and intrepid (13-15 years) courses - Price: on request.

### Nunayak

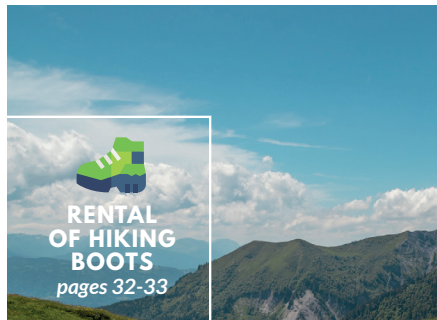
Price: on request.

## TRAIL (16years)

Whether you are preparing for the UTHG or UTMB, or simply want to discover mountain running, opt for a guided outing with Le Sens du Trail!

### Le sens du Trail

Price: contact us.



(3years)

## MOUNTAIN HUTS

An equipped refuge, perfect choice to spend a pleasant and original stay with family, at the middle of the Alpine flora and fauna. In dormitory or room, typical dinner and breakfast to start off on the right foot.

## AT SAMOËNS

### Bostan mountain hut

**Bastien Froissard**  
+33 (0)6 72 64 06 85  
lerefugedebostan@gmail.com  
www.refugedebostan.fr

Price: half board: 43€/adult. Youth and children rates. Overnight stay: 12€. Picnic to take away: 10€. Lunch (omelettes, salads and Savoyard specialties).

### Chardonnière mountain hut

**Joséphine and Nicolas Nachon**  
+33 (0)6 81 35 67 34 (all year round)  
+33 (0)9 72 61 79 24 (from June to September)  
refugechardo@orange.fr  
www.refuge-chardonniere.fr

Price: half board : 45€/pers. Night only : 12€/pers. Breakfast : 10€/pers. Picnic : 10€/pers.



### Folly mountain hut

**Marie and Jacques du Bourg**  
+33 (0)4 50 90 10 91 (from June to September)  
+33 (0)6 72 91 47 58 (all year round)  
refugedufolly@gmail.com  
www.refuge-du-folly.fr

Price: half board: 48€/adult, 37€/child from 6 to 12 years old - Picnic to take away: 15€/adult and 10€/child.

### Lac de Gers mountain hut

**Caroline and Nico**  
+33 (0)9 88 28 44 07  
contact@gitedegers.com  
www.refugedulacdegers.fr

Price: half board : 65€/adult (private shower included), 55€/child (from 4 to 12 years old). Overnight stay: 25€, picnic to take away: 12€.

### Golèse mountain hut

**Sébastien Baud**  
+33 (0)4 50 90 59 53 (Refuge)  
info@refuge-golese.com  
www.refuge-golese.com

Price: half board : from 50€ to 60€/adult, from 40€ to 45€/child (in dormitory or in room). Shower 3€. Picnic to take away : 12€.

## AT SIXT-FER-À-CHEVAL

### Alfred Wills mountain hut

**Bruno Pezet**  
+33 (0)6 70 63 12 45  
bpezet@orange.fr  
www.refuge-wills.com  
(online reservation)

Price: half board : 43€/adult, 33€/child (from 6 to 12 years old). 15€ (- 5 years old).

### Fonts mountain hut

**Nathalie and Benoit Bouvet**  
+33 (0)4 50 34 12 41 (Mountain hut)  
refugedesfont@gmail.com  
www.lesfont.com

Price: half-board adult : 41.50€. Half-board for children under 12 years old : 31.50€. Half-free for children under 6 years old: 21.50€. Free for children under 3 years old - Basket meal to take away: 10€.

### Grenairon mountain hut

**Patrice Lavocat**  
+33 (0)4 50 34 47 31  
contact@grenairon.com  
www.grenairon.com

Price: half-board : 45€/adult, half board child (-12 years old) : 30 €/pers. night : 15 €/pers - Shower : 3€ - Basket meal : 11€.

### Sales mountain hut

**Martène and Christophe Feugueur**  
+33 (0)9 88 18 42 93  
refugedesales@orange.fr  
www.refugedesales.com

Price: Half-board adult 46€. Half-board child 36€. Lunch.

### Vogeaile mountain hut

**Doriane and Dominique Rabot**  
+33 (0)4 58 00 14 85  
(only in season)  
+33 (0)6 20 60 91 40  
contact@refugedelavogeaile.com  
www.refugedelavogeaile.com

Price: half board : 48€/adult, 35€/children under 12 years old. Overnight stay : 17€.

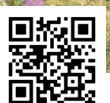




## CYCLING SPORTS

Cycling in Samoëns is suitable for all abilities.

Families or friends, from a simple outing to something more technical, you can enjoy the riches of nature and explore all the different sites : the banks of the Giffre, the lakes at the Lacs aux Dames, the col de Joux Plane, Samoëns 1600 or even the Fer à Cheval. For road cyclists, Samoëns is an unmissable departure point for tackling other climbs in the area, such as La Ramaz and La Colombière.



GET MORE + INFOS ABOUT THE ROUTES

### OUTINGS WITH A GUIDE

Enjoy strolls with a guide in a friendly atmosphere and discover new sensations!

GUIDED TOURS on 2 wheels

**J'aime Sport**

Price: adults from 18€, children from 10€.

HERITAGE TOUR

on electric Mountain Bike

**Mountain Spirit**

Price: adult: 45€ on Wednesdays in July and August.

FRAMED TOUR

on Mountain Bike or electric Mountain Bike

**X'Trême Glisses**

Price: 12€ per hour 33€ 1/2 day and 49€ day.

GIFFRE VALLEY

on electric Mountain Bike

**Mountain Spirit**

Price: 59€.

DISCOVER THE VALLEY SECRETS on 2 wheels

**Anthonioz Ski**

Price : all inclusive mountain bike + accompaniment : from 33€.

MTB TOUR ENDURO

with MCF instructor

**X'Trême Glisses**

Price: group lessons: 30€/person. Special rates on bikes. Protections offered! Private lessons: 60€ : 1h30 - 80€ : 2h - 139€ : 3h.

"LE BOUT DU MONDE" on electric Mountain Bike

**Mountain Spirit.**

Price: adult: 59€.

### LESSON

DOWNHILL MOUNTAIN BIKE COURSE  
MCF Grand Massif School

**Mountain Spirit**

Price: from 59€ to 79€. All-inclusive price with bike, protections, instructor and lifts.

KID CLUB MTB - Group lesson

**Mountain Spirit**

Price: 99€/5 days - 30€/session.

DOWNHILL MOUNTAIN BIKE LESSON

Individual or group with an MCF instructor

**X'Trême Glisses**

Group lessons: 30€/person. Special rates on bikes. Protections offered! Private lessons: 60€ : 1h30 - 80€ : 2h - 139€ : 3h.

### DRIVE DIFFERENTLY

E-FAT-SCOOT

Supervised and unusual thematic rides. Get off the beaten track on electric scooters and come and try an original experience.

ONEWHEEL

Come and test this unique means of locomotion on a motorized board. A gentle introduction on a suitable terrain until the accompanied adventure ride through the Giffre valley.

Rates: "Start-up" session, 45 minutes, 29€/pers. Initiation session + "Mini Ride", 1h30 around the Lac Aux Dames, 49€/pers. "Shred" Tour - 2h - 69€/pers (start-up license required). Free rental - 1h to 1/2 day from 29€. (start-up license required). From 12 years old.

**École de Ski 360 - ESI Samoëns**

Price: from 39 to 69€.

**Anthonioz ski**

Avenue Cognacq Jay  
+33 (0)4 50 34 93 67  
contact@anthonioz-ski.com  
www.anthonioz-ski.com

**École de Ski 360 - ESI Samoëns**

25 avenue Cognacq-Jay  
+33 (0)4 50 53 38 92  
resasamoens@ecoledeski360.com  
www.ecoledeski360.com

**Pellissier Sports**

47 Grande Rue  
+33 (0)4 50 34 18 81  
info@pellissier-sports.com  
www.pellissier-sports.com

**J'aime Sport**

La Cour  
+33 (0)4 50 34 98 20  
jaime.sport@wanadoo.fr  
www.jaimesport.fr

**Mountain Spirit**

135 rue des Billets  
+33 (0)4 56 12 78 39  
mountainspirit.sports@gmail.com  
www.mountainspirit-sports.com

**Sports Expériences**

Rond-point Pas-aux-Loups  
Route du Grand Massif  
+33 (0)4 50 34 90 36  
jaime.sport@wanadoo.fr  
www.jaimesport.fr

**Roland Gay Ski Set Ski Service**

Place du Gros Tilleul  
+33 (0)4 50 34 42 44  
rgski74@orange.fr  
www.skiservice-samoens.com

**X'Trême Glisses**

730 route du Grand Massif  
+33 (0)4 50 89 82 30  
xtremeglisses-samoens@wanadoo.fr  
www.xtremeglisses-samoens.com



LOCATION		Half day price from	Day price from
MTB	Child	9€	14€
	Adult	13€	18€
ROAD BIKE		13€	18€
ENDURO		28€	40€
DOWNHILL		50€	80€
ELECTRIC	Single suspension	29€	49€
	all suspended	50€	79€
FAT BIKE		20€	39€



Labelled village «Accueil vélo»

This label certifies the quality of reception of cyclotourist clientele by the setting up of adapted criteria.



Equipped ski lifts

Grand Massif Ski Areas

+33 (0)4 50 90 40 00  
www.grand-massif.fr  
www.valleeduhautgiffre.fr/vtt (mountain bike trails)



## OTHER MOUNTAIN ACTIVITIES

### ALPINISM (13years)

Discover mountaineering under the supervision of a high mountain guide with beautiful introductory courses in different areas: ice, snow and rock.

HIGH ALTITUDE  
Bureau de Montagne ZigZag  
Price: Please contact us.

Bureau des guides et  
Accompagnateurs de Samoëns  
Price: from 210€ for a half day, 360€ for a day.

ICE RAIDS  
Bureau des guides et  
Accompagnateurs de Samoëns  
Price: please contact us.

ICE TREKKINGS  
Bureau de Montagne ZigZag  
Price: adult: 100€ - Teenager: 100€ - Group price from 5 people + Montenvers train price.

MOUNTAIN COURSE - HIGH ALTITUDE  
Bureau des guides et  
Accompagnateurs de Samoëns  
Price: please contact us.

### HELICOPTER FLIGHT (1year)

Enjoy an unforgettable experience during our helicopter flights over sumptuous landscapes.

Mont Blanc Hélicoptères - MBH  
Price: 150 to 300€.

### CLIMBING (3years)

Discover the vertical environment while having fun. Multitudes of routes at your disposal in a magical setting.

Mountain guide  
Pauline Pretet  
Price: from 35€. Children from 3 years old.

Bureau des guides et  
Accompagnateurs de Samoëns  
Price: from 44€: group lessons - commitment : from 221€ for half a day, 378€ for a day.

Bureau de Montagne ZigZag  
Price: adult: 55€ (introductory or advanced session). Children: 45€ (Introductory or advanced session). Hiring of a private instructor or guide: from 200€.

### PARAGLIDING (4years)

Teaching, internships, beginner level or progress: the paragliding teams can't wait to get in the air with you!

ABC Spirale parapente  
Price: from 75€.

Bureau de Montagne ZigZag  
Price: adult: 85€ - Child: 80€. Video and photos of your flight are optional.

Les Tontons Volants  
Price: from 85€.

Pégase Air Samoëns  
Price: from 80€.



### Sport 2000 - Passion Glisse

Price: please contact us.

### 2 Ski fly

Price: tandem from 80€ - Course from 620€.

### QUAD (16years)

Come and discover the Giffre Valley and its surroundings with an exclusive activity!

J'aime Sport  
Price: from 90€ for a 1 hour walk and 125€ for 2 hours.

### SPELEOLOGY (5years)

Discover the subterranean world full of richness by exploring the caves of Balme or Megevette.

Bureau des guides et  
Accompagnateurs de Samoëns  
Price: from 44€.

Bureau de Montagne ZigZag  
Single price: 60€/pers in mini-group (material included).

Nunayak  
Price: from 55 to 90€.

ABC Spirale parapente  
28 place du Gros Tilleuil  
+33 (0)7 83 83 95 74  
+33 (0)4 57 27 76 20  
info@spirale-parapente.com

Mountain guide  
Pauline Pretet  
180 ch. de sur la ville - Les Beules  
+33 (0)6 71 14 51 19  
pauline@trekycimes.com  
www.trekycimes.com

Bureau de Montagne ZigZag  
126 Grande Rue  
+33 (0)6 31 20 44 10  
info@zigzagski.com  
www.zigzagski.com

Bureau des guides et  
Accompagnateurs de Samoëns  
28 place de l'Office du Tourisme  
+33 (0)4 12 01 00 44  
info@guidesmontagnes.com  
www.guidesmontagnes.com

### VIA CORDA ALPINA (13years)

A good school race. A tour that combines climbing and hiking.

Bureau des guides et  
Accompagnateurs de Samoëns  
Price: commitment 378€ + picnic lunch.

CANI-KART (3years)  
Dog sledding in the majestic site of the Vallon plain in Samoëns.

Nordic Sled Dogs  
Price: from 45€/person. Minimum 12 people.

J'aime Sport  
La Cour  
+33 (0)4 50 34 98 20  
jaime.sport@wanadoo.fr  
www.jaimesport.fr

Les Tontons Volants  
Magasin X'treme Glisses  
730 route du Grand-Massif  
+33 (0)6 20 30 75 53  
+33 (0)4 50 89 82 30  
tontonsvolants@gmail.com  
www.samoens-parapente.fr

Mont Blanc Hélicoptère - MBH  
Les Vallons  
+ 33 (0)4 50 92 78 00  
info@mbh.fr  
www.mbh.fr

Nordic Sled Dogs  
Plaine des Vallons  
+33 (0)7 70 11 14 50  
+33 (0)6 32 83 44 60  
contact@nordic-sled-dogs.fr  
www.nordic-sled-dogs.fr

### VIA FERRATA (10years)

Between hiking or climbing discover an activity mixing verticality and horizontality in perfect safety thanks to our equipped itineraries.

Mountain guide  
Pauline Pretet  
Price: from 37€.

Bureau des guides et  
Accompagnateurs de Samoëns  
Price: from 44€.

Bureau de Montagne ZigZag  
Single price: 55€/pers in mini-group (material included).

Nunayak  
50 route du Fer-à-Cheval  
+33 (0)4 50 93 86 74  
+33 (0)6 75 72 84 21  
contact@nunayak.com  
www.haute-savoie-rafting.com

Pégase Air Samoëns  
Route du Lac-aux-Dames  
+33 (0)4 50 34 95 80  
+33 (0)6 07 14 94 24  
courrier@parapente-samoens.com  
www.parapente-samoens.com

Sport 2000 - Passion Glisse  
16 rue de la Gare  
+33 (0)4 50 34 42 14  
sport2000.samoensvillage@wanadoo.fr  
www.passionglisse.sport2000.fr

2 Ski fly  
1096 route du Lac aux Dames  
+33 (0)6 19 30 35 29  
info@2skifly.com  
www.2skifly.com

Nunayak  
One price: 45€ (Material included in the price).



RENTAL EQUIPMENT VIA FERRATA  
page 32-33



## WATER SPORTS



**Alpes et Canyons**  
+33 (0)6 19 73 73 98  
alpesetcanyons@gmail.com  
www.alpesetcanyons.com

**Mountain guide  
Pauline Pretet**  
180 ch. de sur la ville - Les Beules  
+33 (0)6 71 14 51 19  
pauline@trekycimes.com  
www.trekycimes.com

**Altitude Rafting**  
Chef lieu  
(chalet derrière la mairie de Sixt)  
+33 (0)6 42 52 00 38  
www.eco-rafting.com  
david.julou@altitude-rafting.com  
www.altitude-rafting.com

**Aventure Montagne**  
588 route de Lachat  
+33 (0)6 70 55 51 19  
florent@aventuremontagne.fr  
www.aventuremontagne.fr

**Bureau des guides et  
Accompagnateurs de Samoëns**  
28 place de l'Office du Tourisme  
+ 33 (0)4 12 01 00 44  
info@guidesmontagnes.com  
www.guidesmontagnes.com

**Bureau de Montagne ZigZag**  
126 Grande Rue  
+33 (0)6 31 20 44 10  
info@zigzagski.com  
www.zigzagski.com

**Ecolorado Rafting**  
1148 route de Sixt  
+33 (0)4 50 34 45 26  
+33 (0)6 81 68 79 46  
ecolorado.rafting@orange.fr  
www.ecoloradorafting.com

**J'aime Sport**  
La Cour  
+33 (0)4 50 34 98 20  
jaime.sport@wanadoo.fr  
www.jaimesport.fr

**Nunayak**  
50 route du Fer-à-Cheval  
+33 (0)4 50 93 86 74  
+33 (0)6 75 72 84 21  
contact@nunayak.com  
www.haute-savoie-rafting.com

**Roland Gay Ski Set Ski Services**  
Place du Gros Tilleul  
+33 (0)6 20 54 40 97  
rgski74@orange.fr

**Sport 2000 - Passion Glisse**  
16 rue de la Gare  
+33 (0)4 50 34 42 14  
sport2000.samoensvillage@wanadoo.fr  
www.passionglisse.sport2000.fr

### Ecolorado Rafting

Price: adult: 40€, adults group: 36€, children's group: initiation 30 pers. 34€ (1/2 day).

### J'aime Sport

Price: adult from 42€, child from 38€. From 12 years old.

### Nunayak

Single price: 40€ to 49€ (depending on the route).

### CANYONING 6years

*Come and refresh in a path dug by nature. A hint of adventure, sensations and fun to travel during the activity.*

### Alpes et Canyons

Price : from 39 to 50€. Initiation to expert canyons from 5 years old.

### Mountain guide Pauline Pretet

Price: from 37 €. Child from 6 years old (all safety equipment included).

### Altitude Rafting

Price: discovery price : 39€. Improvement price: 55€.

### Aventure Montagne

Price: from 40 to 75€ - Group and community rates, commitment... Please contact us.

### Bureau des guides et Accompagnateurs de Samoëns

Price: child from 48€, adult from 51€. Equipment provided.

### Bureau de Montagne ZigZag

Price: adults and child from 45€ in mini-groups (equipment provided). Group rates from 4 people.

### Nunayak

Price: 55€ to 89€ (depending on the route).

### HYDROSPEED 12years

*Take the leap into water by testing hydrospeed.*

### Ecolorado Rafting

Price: adult: from 43€, child: from 35 to 39€, adult group: 38€, children group: from 30 to 34€.

### J'aime Sport

Price: from 43€.

### Nunayak

Price: from 45€ to 55€ (depending on the route).

### MINI-RAFT 12years

*Take control of the waves with your mini-raft, sensations and fun guaranteed!*

### Altitude Rafting

Single price: 45€.

### Nunayak

Single price: 45€.

### RAFTING 6years

*Embark with our guides on the river as you have never seen for a fun and friendly activity.*

### Altitude Rafting

Price: 38€/adult, children (12 years and under): 30€; 30€ Group of 4 or more: 35€/adult, 28€/child.

### Bureau de Montagne ZigZag

Price: adult: from 37€ (depending on the formula), child: 32€. Group rate from 5 people.



### Ecolorado Rafting

Price: adult: from 34 to 38€, child : (7 to 11 years old): 30€, adults group : 34€, children group: 28€, family package 4 and more: 34€ per person.

### J'aime Sport

Price: adult: 40€, teenager: 38€, child: 36€. Adults group: from 34 to 38€, children group: from 32 to 36€. Group rate from 6 people.

### Nunayak

Price: from 35€.

### Sport 2000 - Passion Glisse

Price: please contact us.

### WATER SKIING 5years

*Water skiing in the heart of the mountains with homologated slalom - Correct craft zero off new hull!*

### Roland Gay Ski Set Ski Services

Price: please contact us.

### TUBING - THE BLUE BUOYS

#### 12years

*Solo boat that allows you to navigate the rapids of the Giffre in your own boat, accompanied by an instructor.*

### Bureau de Montagne ZigZag

Price: 40€/pers.







## CULTURAL ACTIVITIES

### GUIDED TOURS | 8years

#### Société des maçons Section des guides

+33 (0)4 50 34 40 28 (Tourist office)

+33 (0)6 10 74 70 44

(Aurélie veisy, groups only).

guidespatrimoinesamoens@gmail.com

www.guides-patrimoine-savoie-mont-blanc.fr

Adult: 8€, 12-18 years: 6€, -12 years free.

Registration at the Tourist Office. Possibility of heritage visits on request.

#### VISIT OF THE HISTORICAL TOWN OF SAMOËNS

*Guided discovery of the historical and architectural heritage of the village of Samoëns.*

The tour can be conducted in English.

#### VISIT TO THE VILLAGE OF MATHONEX AND ITS CHAPEL

*Guided tour of one of the nine hamlets of the commune. It also includes old farms.*

#### WHEN DID YOU LAST SEE THE BÉZIÈRE ?

*If you follow its course from Samoëns to the hamlet of Les Fontaines, the Bézière reveals the secrets of a busy life in which water was skilfully used to provide power, without wasting a drop.*

#### HERITAGE FOR ALL ETERNITY SAMOËNS' TOMBS AND GRAVESTONES

*In Samoëns, you can admire funeral art in front of the church hall and in the village cemetery. It is a reflection of the skills and craft of the Giffre Valley's stonemasons and stonecutters in days gone by.*



#### A SIGHTSEEING WALK TO THE VILLAGE OF LES ALLAMANDS

*A sightseeing walk to the hamlet of Les Allamands on the old cross-border track between Haut Faucigny and Valais.*

#### BOTANICAL GARDEN TOUR

*A promontory dominates the village of Samoëns. Once bare rock, today it is hidden under a multitude of plants from all over the world. To travel in the history and space of this «remarkable garden», a guide is required!*

#### TOUR OF CHANTEMERLE

*In an old sunny village, from which the view embraces an admirable panorama, follow in the footsteps of the old mountain people. From the chapel to the traditional houses, with their granaries, sheds and magnificent stone ornaments, discover a way of life that has now disappeared.*

#### TOUR OF LES VALLONS

*Guided tour of the rural heritage in the villages of Les Vallons. Breathe in the fresh air in this pretty little valley where the scenery is dotted with farmhouses and outbuildings such as barns, vegetable plots, sheds and orchards.*

#### E-MOUNTAIN BIKE AND HERITAGE

*Unique in the area! Discover the heritage of the Haut-Giffre valley by electric mountain bike.*

#### Mountain Spirit

135 rue des billets

+33 (0)4 56 12 78 39

mountainspirit.sports@gmail.com

www.mountainspirit-sports.com

Price: 45€.

#### CLOS PARCHET FARM AND FOLK MUSEUM TOUR

##### 4years

*Come and visit the farm and folk museum and see the large collection of everyday items. Step back in time and discover the life of a farming family from the Upper Giffre Valley.*

#### Ferme du Clos Parchet

Chemin rural du Clos Parchet

+33 (0)4 50 34 40 28 (Tourist office)

+33 (0)4 50 34 46 69

(Simone Déchavassine, groups only)

simone.dechavassine@orange.fr

www.le-clos-parchet.com

Price: Adult: 7,50€, children: 4,50€.

Registration at the Tourist Office. In July and August: Tuesday, Thursday and Friday, 2pm and 4pm. From April to October: only on Thursdays, 2pm.



ALPINE BOTANICAL GARDEN WITH 2500 SPECIES



HOME OF STONE MASONS WITH THE GRENETTE, A 16th CENTURY CHURCH (listed)



TRADITIONAL FLOWERED VILLAGE



### HERITAGE

#### Jaÿsinia Botanical Garden

+33 (0)4 50 34 49 86

christian.chauplannaz@mnhn.fr

*This alpine botanic garden was created in 1906 by Marie-Louise Cognacq-Jaÿ who founded La Samaritaine department store in Paris. It is an exceptional garden classified as a «Jardin Remarquable» and scientifically managed by the National History Museum. 4,800 plants and 2,500 different varieties.*

Price: Free admission, no pets allowed.

Opening hours: Every day  
8am-12pm / 1.30pm-7pm

#### COMMENTED TOURS BY SMALL TRAIN

*Let yourself be guided by the Septitrain and discover Samoëns at your own pace, in an original way, with a guided tour.*

#### Grand Tour (Les Vallons) : ≈35mn SAMOËNS (GROS TILLEUL) > LES VALLONS

Departure from Place du Gros Tilleul

Return to Place du Gros Tilleul

Price: adult 6€, child 4€.

#### Over Time : ≈45mn

GRAND TOUR + DISCOVERY TOUR

Price: adult 8€, child 4€.

#### Discovery Tour : ≈20mn

SAMOËNS (GROS TILLEUL) > GME > BASE DE LOISIRS AND RETURN TO THE CENTRE - DEPARTURE FROM GME AT 9.30AM AND 2.30PM

Departure from the centre from 10am to 12pm and from 3pm to 6pm (and more depending on the number of visitors).

Price: adult 4€, child 2€.

#### Septiloisirs

+33 (0)6 10 40 83 08

septiloisirs@aol.com

Group rates on reservation. Minibus on reservation. Tickets sold directly to the driver.





## FAMILY ACTIVITIES



### CARE OF YOUR CHILDREN AND BABIES

Take advantage of the equipment and leisure facilities available to make life easier for you and your children.

#### Leisure center La Marmotte & "Jeunes des Montagnes du Giffre" center

250 route des Péterets  
+33 (0)4 50 47 62 03  
+33 (0)6 42 57 23 34  
enfance-jeunesse@montagnesdugiffre.fr  
www.montagnesdugiffre.fr

Price: rates are calculated according to the family income. Please bring proof of your family income from the CAF or, failing that, the last tax notice of your household when you register.

BABY CARE PLACE  
ESF Public toilets  
+33 (0)4 50 34 42 38

BABY CARRIER HIRE  
**Pellissier Sports**  
47 grande Rue  
+33 (0)4 50 34 18 81  
info@pellissier-sports.com  
www.pellissier-sports.com  
Price: 1 day's rental of the baby carrier: 8€. Week 7 days: 28€.

PRAM AND BABY CARRIER HIRE  
**Sport 2000 / Passion Glisse**  
Rue de la Gare  
+33 (0)4 50 34 42 14  
sport2000.samoensvillage@wanadoo.fr  
www.passionglisse.sport2000.fr  
Price: please contact us.

RENTAL OF BOTTLE WARMERS, UMBRELLA BEDS, PUSHCHAIRS, BABY CARRIERS  
**J'aime Sport**  
La cour  
+33 (0)4 50 34 98 20  
jaime.sport@wanadoo.fr  
www.jaimesport.fr  
Price: please contact us.



### PONY CYCLE (3-8years)

Pony Cycle hire for children. Mounts that work with leg power by simply pressing down.

**École de Ski 360 - ESI Samoëns**  
25 avenue Cognacq-Jay  
Tél. : +33 (0)4 50 53 38 92  
infosamoens@ecoledeski360.com  
www.ecoledeski360.com  
Rental price: from 20€.

### ROSALIE (2years)

Hire of rosalie (pedal cars) with 3 or 6 seats.

**Roland Gay Ski Set Ski Service**  
4 place du Gros Tilleul  
+33 (0)4 50 34 42 44  
rgski74@orange.fr

Price: 3 or 6-seater rosalie rental by the half-hour or by the hour from 6€.

### FARM VISIT

Come and meet the farmers to discover their job, their animals (cows, goats...) and taste delicious products.

#### GAEC Le Criou farm

95 chemin du Bré - Chez Renand  
+33 (0)6 08 47 92 38  
Family-run farm, production and sale of fresh farmhouse cheeses made from the milk of our cows. Open every day: 5.45-7pm. Closed on Sundays.

#### Croës Canailles farm

976 route de la Turche de Vercland  
+33 (0)6 62 48 81 67  
+33 (0)6 60 51 56 01  
Herens cow breeder - Producer - Cheese maker - Refiner - Farm gate sales. Open: Monday, Tuesday, Friday and Saturday from 10am to 12.30pm.

#### Cimes Farm

1431, route du Col de Joux Plane - La Combe Emeru  
+33 (0)6 79 88 07 21  
Production of cow's and goat's milk cheeses. Visit by reservation + snack at the farm. Open every day, all year round.

### PÉTANQUE & MÖLKKY (4years)

Discover the joys of pétanque and Mölkkky with your family in a friendly atmosphere.

Land of the place des 7 Monts, the cinema, Pas aux loups and Lac aux dames.



### CULTURAL ACTIVITIES (3years)

#### Le Criou cinema

Cinema open in season. 2 to 3 sessions per day depending on the weather. varied program every day. Reservations + info/ program : [www.cinema-samoens.fr](http://www.cinema-samoens.fr)

219, rue des Billets  
+33 (0)4 50 34 41 40  
info@cinemonde.fr

Price: admission 9€, children from 3 to 11 years old 5€, young people from 12 to 17 years old 6,50€, seniors +65 years old 7,50€.

#### François-Désarnod Municipal library

Friendly cultural space open all year round to all audiences. The subscribers can borrow documents and use computers. Animations are regularly organized in partnership with the association Criou Livres.

4 route de Taninges - Le Petit Bellevue  
+33 (0)4 50 34 95 77  
bib.samoens@orange.fr  
www.samoens-biblio.fr

Price: short subscriptions: 6€/2 months and 15€/6 months - Deposit of 50€. Yearly subscriptions: 20€ for residents in the commune and 22€ outside the commune. Free for children under 18 years old.

### VISIT TO A POTTERY WORKSHOP (3years)

Handcrafted objects. Cécile welcomes you in her workshop to explain her profession of potter.

#### L'atelier de Puce - Poterie

492 route de la Combe de Mathonex  
+33 (0)6 58 10 45 56  
puce\_cec@hotmail.com  
www.latelierdepuce.com

The boutique workshop is open Monday or Friday afternoon (free demonstration) and paid initiation on reservation.



### EVENTS

Find all our events on page 66  
Weekly programme of events available at the Tourist Office or on our website : [www.samoens.com](http://www.samoens.com)



THINK ABOUT THE TRAIN  
to visit the village page 17



BABY-SITTING list available at the tourist office or on our website in the «download» section



## THE LEISURE PARK

The leisure park is built around 2 lakes, a little way out of the village centre.

It extends over an area of 10 hectares. It is the ideal place for relaxing with your friends and family.

You can walk, fish, stroll, run... Away from cars and noise, there is a large area for games where children can play as well as football and basket-ball pitches for teenagers.

There are a number of other activities on offer throughout the summer, at the leisure park and in the heart of the village, for you to discover.

### Le Bois Aux Dames Sports and cultural centre.

600 route du Lac aux Dames  
+33 (0)4 50 89 71 18  
leboisauxdames@gmail.com  
www.mairiedesamoens.fr

Price: information and reservations on request.



### PLAY AREA FOR THE CHILDREN

### TENNIS & BEACH TENNIS

#### TEACHING

Tennis and beach tennis courses and lessons for children and adults. State-qualified teacher.

Information and details on the club website.

#### RENTAL OF TENNIS COURTS AND BEACH TENNIS

Reservation via the Ten up application or on site in July and August.

12€ per hour. Snowshoes for hire.

#### ORGANISATION OF TOURNAMENTS

TMC every Sunday during the summer. Beach tennis tournaments.

Programme on the club website.

#### SUMMER EVENTS

Discovering beach tennis and friendly tournaments.

Programme on the club website.

#### Tennis Club

588 route du Lac aux Dames  
+33 (0)4 50 34 94 36  
samoens@tennisdugiffre.fr  
www.samoens.tennisdugiffre.fr



### FOOTBALL, BASKETBALL AND RUGBY PITCHES



### FISHING [5years]

You can fish on one of the wildest and most natural courses in the region: high altitude and lowland lakes, torrents, rivers. You can also fish in the Lac aux Dames. Fishing parties organised by the Fishing Society.

Fishing permit on sale at the Tourist Office. Lac aux Dames: 17€. High altitude lakes, torrents and rivers: consult us.



### SWIMMING AT THE LAC AUX DAMES

Swimming in the lake is possible from 1 July to 8 September from 10 am to 6 pm.



### HORSE RIDING [1year]

Learn to ride a horse or come for a walk with family. Several pony courses available.

#### Équita-Passion

Base de loisirs - Lac aux dames  
+33 (0)6 03 57 17 01  
edelmaeva@gmail.com  
www.equita-passion.sitew.com

Price: horse riding - 1h30 : 34€, 2h : 39€, day : 99€. 5 day pony or horse course : 160€. 10 lessons with different levels : 230€. 35 min carriage ride : 20€/adult, 10€/child.



### PICNIC AREA LAC AUX DAMES

More information on [www.samoens.com](http://www.samoens.com)



### SWIMMING POOL



Sports pool, a training pool of 25x12.5 metres, a paddling pool and a water-slide 60 metres long. Lawns of 6000m<sup>2</sup> as well as a play area for ball games (tennis, volleyball) so that children are able to play freely. Swimming lessons. Swimming club in July and August.

#### Piscine municipale

496 route Lac aux Dames  
+33 (0)4 50 34 40 73  
piscine-patinoire.samoens@orange.fr  
Price (for information only) : 4,90€/adult, 3,90€/child.  
End of day entry (after 5.30pm) : 2€.  
10 entry card : 35€. Subscription possible.



## WELL-BEING ACTIVITIES

Trendy, often exotic, but always benefitting the body and the morale, relaxation activities are a new way of moving and of being aware of oneself at the same time. Many of these activities are carried out in the wonderful setting of the mountains, where the benefits are ten-fold. Take time out to live well in Samoëns.

### WELL-BEING AREAS | 6years|

*A perfect extension of the unique Mountain's spirit... Immerse yourself in the captivating scents of nature, discover the stories and experiences of each care ritual by living a unique sensory experience.*

SPA D'ALTITUDE Ô DES CIMES  
A MOUNTAIN SENSORIAL  
EXPERIENCE

#### Spa Ô des Cimes

##### "Les Chalets de Lajssia"

Dispensed with the Sothys brand, discover a range of tailor-made massages for the face and body. Children -from 6 years old- will not be left out thanks to the natural and greedy products of the Nougatine brand which will allow them to taste the benefits of a care adapted to their sensitive skin.

From 42€. Treat yourself with our gift vouchers.

#### Spa Ô des Cimes "La Reine des Prés"

A real invitation to travel, we welcome you in a cocooning and warm bubble of relaxation. Enjoy the benefits of a body and/or facial treatment with Codage products. And for a moment of complicity, share a duo massage!

From 42€. Treat yourself with our gift vouchers.

#### SPA MONTAGNES DU MONDE®

##### Hôtel \*\*\*\* & Résidence \*\*\*\*\* Alexane

A unique sensory journey awaits you in the Spa Montagnes du Monde® of the Hotel & Residence Alexane. Discover the skincare and body treatments developed by our experts as well as our well-being facilities such as the floating bed.

Access to our wellness area: swimming pool, sauna, hammam, whirlpool, Nordic bath and sensory shower. Price: from 25 to 130€. More info: [www.alexane-hotel-spa.com](http://www.alexane-hotel-spa.com)



### MASSAGES & SOINS ÉNERGÉTIQUES | 6months|

*Massage benefits have been known for millennia. Many part of the world are developing techniques that bring rest and well-being.*

WORLD MESSAGES  
DESTINATION

#### Roxane Thivierge

Energetic massages - Holistic approach to well-being. Chrong Maï, Shanti massage, Shiatsu & singing bowls, back massage, light legs, zen feet, mother-to-be and possibility of massage packages. Energetic Mindfulness tools: Access Bars and Access Concussion. Nature workshop «The 5 senses in the mountains».

Price: from 50€/1 hour. On reservation.

BODY LISTENING

#### Quintessence

A treatment based on oil and essential oils, continuous gestures, acupressure and stretching.

Price: Adult: 50€ (per hour + 10€ at home), including a conversation.

THE SENSORIAL

#### Quintessence

A treatment based on oil and essential oils that regenerates and harmonises the body and mind with a deep sense of well-being.

Price: adult: from 30 to 50€ (+ 10€ at home).

REFLEXOLOGY - PLANTAR  
MASSAGE

#### Pasquier Mariel

Reflexology, considered as an alternative medicine, aims at restoring the body's energy balance.

Price: adult: 60€ per hour, teenager: 40€ per hour, child: 30€ per hour.

TUI NA MASSAGE - CHINESE

#### Pasquier Mariel

Tui Na is an energetic massage that is part of the 5 branches of Traditional Chinese Medicine.

Price: 1h30 : 90€.

#### ATMA sphère

##### Massages bon-être

##### Douceurs du monde

##### Marie LORIOT

Come and get in touch with the best of yourself. Relaxation and wellness massages from different traditions, practiced on the skin with warm oil and organic essential oils.

Price: 30 min: 40€, 1h: 70€, 1h30: 95€ and 2h: 120€.

AYURVEDIC MASSAGE

#### Isabelle Floquet

Shiro Abhyanga is a hot oil head massage that relaxes the body and mind.

Price: 45 mn : 40€.

MASSAGE & CARE

#### Terres de bien-être

The association «Terres de bien-être» is a network of practitioners around well-being. We offer activities and treatments (group or individual courses) to meet your needs to take care of yourself.

Price: please contact us.



### WELL-BEING ACTIVITIES

ART THERAPY

#### Espace "Bulle de soi"

Certified Art Therapist (RNCP), individual and group art therapy. Artistic expression workshops.

156 grande rue  
+33 (0)6 11 83 98 39  
atelierc74@gmail.com

Price: according to services.

COACHING

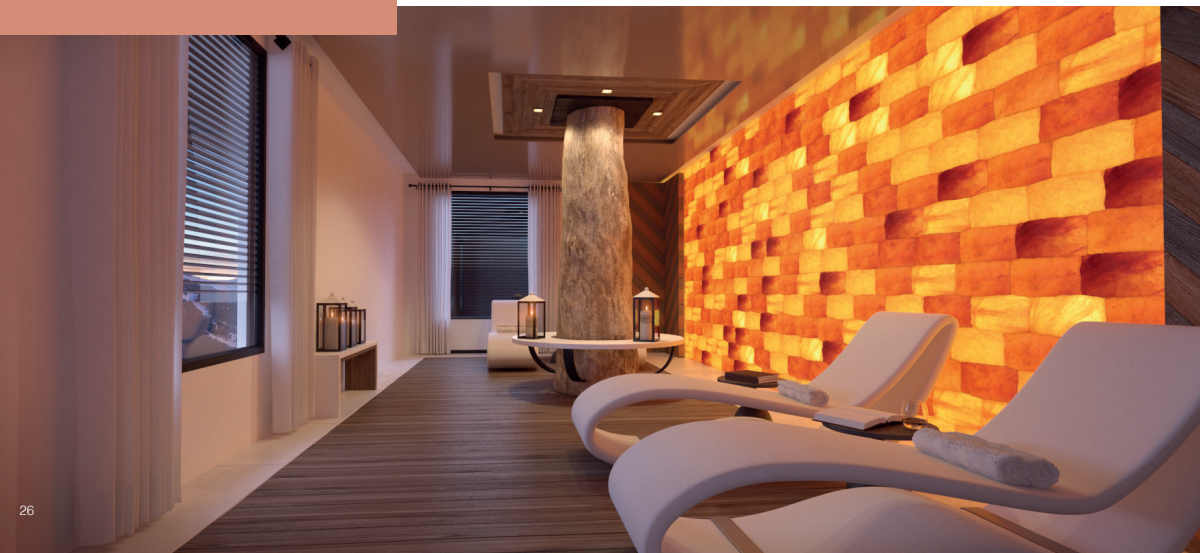
#### Octoplus Coaching

Octoplus-coaching offers you sports, life and mental coaching.

146 rue Narvik - Saint-Jeoire  
+33 (0)6 18 18 33 20  
+33 (0)6 08 07 80 17

emilie.cruz@octoplus-coaching.com  
www.octoplus-coaching.com

Single price: 65€.





## YOGA (5years)

*Yoga is the practice of a set of postures and breathing exercises that aim to bring physical and mental well-being.*

HATHA-YOGA EVA RUCHPAUL

### Isabelle Floquet

*Group or individual sessions, pre/post natal, in the countryside or in the new «O fil de l'O» wellness area in Samoëns.*

Price: from 14€ (1h15).

YOGA HIKING

### Quintessence

*The combination of hiking and the physical practice of yoga to recharge your batteries.*

Price: adult : from 25 to 36€ (half day : 25€ - day : 36€).



## WELL BEING HIKES

(10years)

*Wellness tours combine the benefits of fitness with the pleasures of hiking. Enjoy beautiful landscapes and moments of relaxation after the effort.*

AFGHAN WALK

*A relaxing and meditative experience.*

### Quintessence

Price: from 25€.

SENSORIAL WALK

*This active and sensitive encounter with nature has many benefits.*

### Quintessence

Price: adult: from 25 to 36€ (half day: 25€ - day: 36€).

NATURE WORKSHOPS :  
5 SENSES IN 3 STEPS

*Workshop to discover your 5 senses, proposed in several stages by Roxane, massage practitioner, and Mathias, mountain guide and naturalist.*

### Roxane Thivierge

Price: adult: 35€, children: 30€.

## ATMA sphère - Marie Loriot

lechaletdevigny@gmail.com  
+33 (0)06 82 91 68 04  
www.lechaletdevigny-samoens.com

## Bureau des guides et Accompagnateurs de Samoëns

28 place de l'Office-du Tourisme  
+33 (0)4 12 01 00 44  
info@guidesmontagnes.com  
www.guidesmontagnes.com

## Destination Massage Roxane Thivierge

Galerie des Dents Blanches  
+33 (0)6 13 12 50 12  
roxy.decham@wanadoo.fr

## Isabelle Floquet

+33 (0)6 23 46 72 20  
yogajaw@protonmail.com

## Le Spa "Montagnes du Monde" Hôtel & Résidence Alexane

20 avenue du Giffre  
+33 (0)4 50 272 272  
alexane@mgm-groupe.com  
www.mgm-hotels-residences.com

## Pasquier Mariel

538 route de Taninges - Le Bérrouze  
+33 (0)6 11 39 65 99  
marielpasquier@gmail.com

## Quintessence

+33 (0)6 72 62 24 64  
philipczyk@free.fr  
www.nature-quintessence.fr

## Spa d'altitude Ô des Cimes "Les Chalets de Layssia"

19 place des 7 Monts  
+33 (0)4 50 91 76 77  
layssia@cgh-residences.com  
www.odescimes.com

## Spa d'altitude Ô des Cimes "La Reine des Prés"

132 route du Grand Massif  
+33 (0)4 50 78 01 77  
reine@cgh-residences.com  
www.odescimes.com

## Terres de bien-être

terresdebienetre@gmail.com  
terresdebienetre74.wixsite.com/samoens



## ACTIVITIES FOR DISABLED PEOPLE



## ALL-TERRAIN WHEELCHAIR

(12years)

*An all-terrain wheelchair outing lies somewhere between mountain biking and quad bike riding. You can travel along all the paths on the mountainside, enjoying the sensation of speed and sharing descents with family or friends.*

## Samoëns Handi-Glisse

Price: Contact us directly, variable according to the time of practice.

## JOÛLETTE OUTING (12years)

*The joëlette is a way to discover nature, flora and fauna, scents of the undergrowth, simply walk around and share a privileged moment with family, friends in complete safety.*

## Samoëns Handi-Glisse

Price: On loan.

## ELECTRIC FFT (12years)

*Discover the Giffre valley in an all terrain electric wheel-chair.*

## Samoëns Handi-Glisse

Price: please contact us.



## Samoëns Handi-Glisse

552 route de Vallon d'en Bas  
+33 (0)6 10 74 70 44 (Aurélié Veisy)  
+33 (0)6 80 66 55 60 (Michel Veisy)  
michel.veisy@laposte.fr  
www.samoens-handiglisse.com

## CIMGO OUTING (6years)

*all-terrain tandem*

*Whether or not you love tandem skiing in winter, would you like to enjoy a similar activity once the snow has melted ? Now you can, thanks to the Cimgo (an all-terrain tandem) !*

## Samoëns Handi-Glisse

Price: please contact us.

## PARAGLIDING (4years)

*First flight in a paraglider for people with reduced mobility.*

## ABC Spirale Parapente

28 place du Gros Tilleul  
+33 (0)4 57 27 76 20  
+33 (0)7 83 83 95 74  
info@spirale-parapente.com  
Price: adult from 75€.

## Pégase Air Samoëns

496 route du Lac aux Dames  
+33 (0)4 50 34 95 80  
+33 (0)6 07 14 94 24  
courrier@parapente-samoens.com  
www.parapente-samoens.com  
Price: adult 100€.



## PLEASE ASK FOR OUR BROCHURE

*about the accessibility «Samoëns for everyone» on request at the Tourist Office. In French only. Also available on :*

[www.samoens.com/downloads](http://www.samoens.com/downloads)



**USEFUL  
ADDRESSES**



**FOOD**

**Artisanal beer Brewer  
Brasserie**

**de la vallée du Giffre**  
331 Z.A de l'Épure - Verchais  
+33 (0)4 50 89 16 63  
labrasserieducgiffre@gmail.com  
www.bieres-du-giffre.com

**Butchers and  
delicatessens**

**Le Pied de Poule**  
Résidence les Ecrins étoilés  
20 route de Sixt  
+33 (0)4 50 58 74 03  
lepied-depoule@orange.fr  
www.boucherie-lepieddepoule.fr

**Le Veau Gras**

Immeuble la Bourgeoise  
+33 (0)4 50 34 47 36  
petitchauveau@gmail.com

**Bakeries and pastry**

**À la Jaÿsinia**  
Grande rue  
+33 (0)4 50 34 40 31  
contact@a-la-jaysinia.com

**Bakery Tiffanie  
Village center**

70 Grande rue  
+33 (0)4 50 34 97 01

**Boulangerie Tiffanie**

**Grand Massif Express**  
Avenue du Giffre  
+33 (0)4 50 34 42 62

**Wine merchants**

**La Feuille de Vigne  
Savojarde**  
112 avenue Cognacq Jay  
+33 (0)6 73 84 21 53  
lafeuilledevignesavojarde@  
gmail.com

**Le Nez en l'air**

Le pied de la ville  
4 route de la Piaz  
+33 (0)6 84 70 46 65  
+33 (0)4 50 18 60 85  
lenezdanslacave@gmail.com

**Confectionery**

**Montagne et Chocolat**  
Chalet Savoyard  
3 Grande rue  
+33 (0)4 50 78 41 87  
chocolaterieduhautgiffre@  
gmail.com

**Cheese factory**

**Fruitière des Hauts de  
Savoie**  
502 avenue du Fer-à-Cheval  
+33 (0)4 50 89 52 85



**MARKET EVERY  
WEDNESDAY  
MORNING**

**Farmhouse cheeses**

**Ferme des Cimes**  
1431 rte. du col de Joux Plane  
La Combe Emeru  
+33 (0)6 79 88 07 21  
robin.sarah74@gmail.com

**GAEC de Croës Canailles  
Hérens breeder**

976 rte. de la Turche de Vercland  
+33 (0)6 62 48 81 67  
+33 (0)6 60 51 56 01  
favrebonvinbruce@gmail.com

**GAEC Le Criou  
Farmhouse fresh cheese**

95 ch. du Bré chez Renand  
+33 (0)6 08 47 92 38

**Regional products**

**La Tour Gourmande**  
1 Grande rue  
+33 (0)4 50 34 42 54  
www.latourgourmande-  
samoens.com

**Le Grenier Savoyard**

7 Grande rue  
+33 (0)4 50 34 48 22  
info@greniersavoysard.fr  
www.greniersavoysard.fr  
(Online sales all year round)

**Le Refuge des Saveurs**

78 Grande rue  
+33 (0)4 50 53 38 86  
refugedessaveurs@orange.fr

**Waffles**

**Les Gaufres de Yoyo**  
In the markets  
(Wednesday morning in  
Samoëns)  
+33 (0)6 20 19 60 59  
lesgaufresdeyoyo@gmail.com

**Tea rooms**

**À la Jaÿsinia**  
Grande rue  
+33 (0)4 50 34 40 31  
contact@a-la-jaysinia.com

**Les Tartines  
de Martine**

Avenue Cognacq-Jay  
+33 (0)4 57 44 50 16

**Living room - Tea room**

Avenue du Giffre  
+33 (0)4 50 34 42 62

**Supermarkets**

**Sherpa,  
mon super marché**  
Villa Monette  
224 rue des Billets  
+33 (0)4 50 53 43 50  
sherpa.samoens@yahoo.com

**Organic grocery shop**

**Au Nid Nature**  
81 place des 7 Monts  
+33 (0)4 50 78 48 83  
aunidnature@gmail.com  
www.aunidnaturebio.fr

**Fresh pasta  
Italian grocery**

**Atelier des pâtes**  
50 place des Dents Blanches  
+33 (0)6 10 40 99 73  
latelierdespates-samoens@  
outlook.fr

**Caterers**

**Le Pied de Poule**  
Résidence les Ecrins étoilés  
20 route de Sixt  
+33 (0)4 50 58 74 03  
lepied-depoule@orange.fr  
www.boucherie-lepieddepoule.fr

**Le Veau Gras**

Immeuble la Bourgeoise  
+33 (0)4 50 34 47 36  
petitchauveau@gmail.com

**Traiteur du Haut-Giffre**

1440 route du Villard  
ZA des Chênets  
+33 (0)4 50 91 83 57  
traiteurhautgiffre@orange.fr  
www.traiteur-du-haut-giffre.com

**Le Fumet du bocal**

78 avenue Cognacq Jay  
+33 (0)6 98 99 03 36  
karlitobouin@gmail.com

**ADMINISTRATIVE  
SERVICES**

**National gendarmerie**

La Cour  
17 (Emergencies)  
+33 (0)4 50 34 40 05

**La Poste - Cash  
dispensers**

Place des Dents Blanches  
+33 (0)4 50 34 42 00

**Town Hall**

Place des Dents-Blanches  
+33 (0)4 50 34 42 38  
www.mairiedesamoens.fr

**Local Police**

Place des Dents-Blanches  
+33 (0)4 50 90 82 97  
police.samoens@orange.fr

**Municipal technical  
centre**

Avenue du Giffre  
+33 (0)4 50 34 43 40

**HEALTH**



**Doctors**

**Medical Center**  
123 rue Cognacq-Jay  
+33 (0)4 50 34 41 88

**Dentists**

**Meynent Fabien  
& Lech Stéphanie**  
123 rue Cognacq Jay  
+33 (0)4 50 34 14 55

**Nurses**

**Nursing practice**  
Immeuble La Bourgeoise

**Pharmacy**

**Deffaugt-Sanchez**  
Rue Cognacq-Jay  
+33 (0)4 50 34 40 10  
pharmaciedefaufft.sanchez@  
perso.alliadis.net

**Osteopaths**

**Berra Erica**  
Le Planet - Les Billets  
+33 (0)4 50 91 68 09

**Castella Magali**

Les chalets de Layssia  
76 avenue des Glaciers  
+33 (0)4 50 47 51 07  
+33 (0)6 31 71 05 86  
mcastella.oste@gmail.com

**Coppo Julien**

Place du Gros Tilleul  
Immeuble la Grenette  
+33 (0)6 22 87 88 12

**Podiatrist**

**Festuot Alice**  
36 place du Criou  
+33 (0)4 50 34 41 50

**Veterinarian**

**Delacoste Magali**  
La Cour  
+33 (0)4 50 34 44 93



## Bars - Restaurants

### at the village

	BAR	TRADITIONAL	SAVOYARD	BISTRONOMIC	PIZZERIA	CREPERIE	HOME DELIVERY	FAST	VEGETARIAN	ON THE FARM	NUMBER OF COVERS	TICKET RESTAURANT	HOLIDAY VOUCHER
<b>Apéro S'PACE lounge les Glaciers</b> 143 Grande rue +33 (0)4 50 34 40 06 contact@hotel-les-glaciers.com www.hotellesglaciers.com	●										70	TICKET RESTAURANT	HOLIDAY VOUCHER
<b>Au Relais Septimontain</b> 10 place des Sept-Monts +33 (0)4 50 34 42 19 relais.septimontain@orange.fr www.relais-septimontain.com		●	●								50	TICKET RESTAURANT	HOLIDAY VOUCHER
<b>Bon Appétit</b> + 33(0)4 86 80 12 08 www.bonappetalpes.com info@bonappetalpes.com						●							
<b>Fabio Café</b> 20 avenue du Giffre + 33 (0)4 50 93 94 05 www.fabio-bar-a-vin.fr	●	●	●				●	●			50	TICKET RESTAURANT	HOLIDAY VOUCHER
<b>Fabio Restaurant</b> 20 avenue du Giffre + 33 (0)4 50 21 28 36 sm@fabio-restaurant.com		●		●			●	●			100		
<b>Ferme de Bémont</b> Bémont d'en Haut - Vercland +33 (0)6 73 59 31 15 sylvie.mogenet@orange.fr			●						●		60		
<b>Ferme restaurant l'Accueil savoyard</b> 1448 route des Mouilles +33 (0)4 50 34 41 86 www.accueil-savoyard.com		●							●		45		
<b>La Canette</b> 176 Grande rue +33 (0)6 95 28 58 94	●						●				18	TICKET RESTAURANT	HOLIDAY VOUCHER
<b>L'Accordéon</b> 132 avenue Cognacq Jay +33 (0)4 50 89 94 20 laccordeonsamoens@gmail.com	●	●					●	●			40		
<b>La Fandioleuse</b> Chemin de la Cour +33 (0)4 50 34 98 28			●		●						50	TICKET RESTAURANT	HOLIDAY VOUCHER
<b>La Grignoterie</b> 385 chemin de la Cour +33 (0)4 50 34 92 96 info@dahu1951.com www.dahu1951.com	●	●	●					●			45		

### Bars - Restaurants at the village

	BAR	TRADITIONAL	SAVOYARD	BISTRONOMIC	PIZZERIA	CREPERIE	HOME DELIVERY	FAST	VEGETARIAN	ON THE FARM	NUMBER OF COVERS	TICKET RESTAURANT	HOLIDAY VOUCHER
<b>Le Red Rock</b> 71 rue des Billets +33 (0)6 16 99 15 86 www.linktr.ee/red_rock	●												
<b>Le Matefaim</b> 728 route du Grand Massif +33 (0)4 50 34 60 71				●	●								
<b>La Table de Fifine</b> 612 chemin de la Cour +33 (0)4 50 34 10 29 latabledefifine@gmail.com www.latabledefifine.com		●	●	●							80		HOLIDAY VOUCHER
<b>L'entre 2 lacs</b> Base de loisirs (entre les 2 lacs aux Dames) +33 (0)6 67 83 85 38 lagamelle.1600@gmail.com	●	●					●	●					
<b>Le Frahan</b> +33 (0)4 50 54 40 68 lefrahan74@gmail.com		●	●	●							61		
<b>Le Kern</b> 1096 route du Lac aux Dames +33 (0)4 56 37 79 16 +33 (0)6 83 67 80 73 lessepticopains@gmail.com	●	●					●				50		
<b>L'Estanco</b> 82 avenue Cognacq-Jay +33 (0)4 50 34 40 11		●	●					●			60		
<b>L'Etable</b> 536 route de Lachat +33 (0)4 50 34 99 73 +33 (0)6 35 32 73 50 letablesamoens@gmail.com		●	●						●		21		
<b>Les Tartines de Martine</b> 65 Grande rue +33 (0)4 57 44 50 16							●	●			20		
<b>Le Savoie</b> 108 place du Gros Tilleul +33 (0)4 56 37 72 12 contact@le-savoie.com www.le-savoie.com	●	●	●				●				70		

## Bars - Restaurants

### at the village

	BAR	TRADITIONAL	SAVOYARD	BISTRONOMIC	PIZZERIA	CREPERIE	HOME DELIVERY	FAST	VEGETARIAN	ON THE FARM	NUMBER OF COVERS	TICKET RESTAURANT	HOLIDAY VOUCHER
<b>Le Sérac</b> Galerie des Dents Blanches +33 (0)4 50 34 45 18 yeopesty66is@gmail.com		•	•		•						80		
<b>Melting Spot (Café de la Poste)</b> Place du Criou +33 (0)6 12 20 68 85 +33 (0)4 57 44 66 27 meltingspot74@gmail.com	•	•	•								50		HOLIDAY VOUCHER
<b>Restaurant de l'hôtel La Boule de Neige</b> 220 chemin des Bollus - Vercland +33 (0)4 50 34 44 58 hotelrestabouledeneige@wanadoo.fr www.labouledeneige.com	•	•	•								120		HOLIDAY VOUCHER
<b>Restaurant de l'hôtel Le Gai Soleil</b> Le Bourg - 26 route de Taninges +33 (0)4 50 34 40 74 hotel.gai-soleil@wanadoo.fr www.hotel-samoens.com		•	•	•							80		HOLIDAY VOUCHER
<b>Restaurant de l'hôtel Neige et Roc</b> 255 route de Taninges +33 (0)4 50 34 40 72 resa@neigeetroc.com www.neigeetroc.com	•	•	•	•							80		HOLIDAY VOUCHER
<b>Restaurant de l'hôtel l'Edelweiss</b> 809 route de la Piaze +33 (0)4 50 34 41 32 hotel-edelweiss@wanadoo.fr www.edelweiss-samoens.com		•	•								40		HOLIDAY VOUCHER
<b>Symbiose de Saveurs</b> +33 (0)6 07 66 16 70 symbiosedesaveurs@gmail.com facebook/symbiosedesaveurs		•	•	•				•					Chef at home
<b>8M des Monts</b> Place de l'Eglise +33 (0)4 50 21 30 01 resto.8mdesmonts@yahoo.fr www.facebook/8mdesmonts			•					•			28		

## Bars - Restaurants Samoëns 1600

	BAR	TRADITIONAL	SAVOYARD	BISTRONOMIC	PIZZERIA	CREPERIE	HOME DELIVERY	FAST	VEGETARIAN	ON THE FARM	NUMBER OF COVERS	TICKET RESTAURANT	HOLIDAY VOUCHER
<b>Chalet l'Aéro</b> Plateau des Saix +33 (0)4 50 54 73 79 contact@aero1607.com www.aero1607.com		•	•										55
<b>Demoiselle des Saix</b> 660 plateau des saix +33 (0)7 85 02 14 55 pistenoire1w600@gmail.com www.demoiselledessaix.eatbu.com	•	•	•		•		•				50		HOLIDAY VOUCHER
<b>Le 45,8°</b> 660 plateau des Saix +33 (0)6 43 58 09 04 www.le45-8barrestaurant.fr	•	•	•	•			•				150		TICKET RESTAURANT HOLIDAY VOUCHER



**WANT TO EAT IN THE MOUNTAINS?**  
Think about our mountain huts page 7





# Sports shops

## at the village

	MOUNTAIN BIKE	ELECTRIC MTB	FAT BIKE	ELECTRIC FAT BIKE	RACING AND GRAVEL BIKES	ROAD CYCLING	ELECTRIC ROAD CYCLING	CROSS COUNTRY	ENDURO	DOWNHILL	BABY EQUIPMENT	CHILD BIKE	QUAD	MOUNTAIN AND HIKING EQUIPMENT	RENTAL OF HIKING SHOES	ALPINISM	VIA FERRATA	CANYONING	RAFTING	HYDROSPEED	AIR BOAT	CANOGRAFT	WHITE WATER EQUIPMENT	ROSALLE	
<b>Anthonioz Ski</b> 56 avenue Cognacq-Jay +33 (0)4 50 34 93 67 contact@anthonioz-ski.com www.anthonioz-ski.com	•	•	•	•	•	•	•	•	•	•	•	•													
<b>Intersport Samoëns</b> 1367 route de Taninges contact@samoens-intersport.com www.samoens-intersport.com	•	•																							
<b>J'Aime Sport</b> 217 avenue du Fer à Cheval +33 (0)4 50 34 98 20 jaime.sport@orange.fr www.jaimesport.fr	•	•		•	•	•	•	•	•	•								•	•	•	•	•	•	•	
<b>Mountain spirit</b> 135 rue des billets +33 (0)4 56 12 78 39 mountainspirit.sports@gmail.com www.mountainspirit-sports.com	•	•	•	•			•	•		•		•													
<b>Pellissier Sports</b> 47 Grande rue +33 (0)4 50 34 18 81 info@pellissier-sports.com www.pellissier-sports.com											•		•	•	•	•									
<b>Roland Gay Ski Service Ski Set</b> Place du Gros Tilleul +33 (0)4 50 34 42 44 rgski74@orange.fr www.skiservice-samoens.com	•	•								•														•	
<b>Sport 2000 - Passion Glisse</b> 16 rue de la Gare +33 (0)4 50 34 42 14 sport2000.samoensvillage@wanadoo.fr www.passionglisse.sport2000.fr											•								•						
<b>Sports Expériences</b> 718 route du grand massif +33 (0)4 50 34 90 36 jaime.sport@orange.fr www.jaimesport.fr	•	•		•	•	•	•	•	•	•	•	•	•	•	•	•			•	•	•	•	•	•	
<b>X'Trême Glisses</b> 730 route du Grand Massif Express +33 (0)4 50 89 82 30 xtremeglisses-samoens@wanadoo.fr www.xtremeglisses-samoens.com	•	•		•	•	•	•	•	•	•		•		•		•									



## USEFUL ADDRESSES




## EMERGENCIES

15 Samu  
17 Police rescue  
18 Fire brigade  
112 General

## SHOPS

**Shoe shop**  
**Pellissier Chaussures**  
56 Grande rue  
+33 (0)4 50 34 43 07  
contact@samoens-location.com

**Hairdressers**  
**Espace Soan**  
Les Espaces  
175 rue des Billets  
+33 (0)4 50 91 64 26  
www.espace-soan.com

**Le Salon**  
Immeuble les Campanules  
194 Grande rue  
+33 (0)4 50 34 46 77

**Decoration - Crafts**  
**L'atelier de Puce - Pottery**  
492 route de la Combe de Mathonex  
+33 (0)6 58 10 45 56  
puce\_cec@hotmail.com  
www.latelierdepuce.com

**Decoration - Gifts**  
**Souvenirs & cutlery**  
**Granger**  
152 Grande rue  
+33 (0)4 50 34 41 91  
quincagranger@orange.fr  
www.granger-deco.com

**Dahu&Co**  
91 avenue Cognacq Jay  
+33 (0)4 50 34 99 12  
contact@dahuandco.com

**L'Art des choix**  
**Cutlery**  
102 avenue Cognacq Jay  
+33 (0)4 50 34 40 32  
lartdeschoix@mail.fr  
FB : lartdeschoixsamoens

**La Maison**  
**de Marie-Louise**  
4 Grande rue  
+33 (0)9 83 46 61 34  
lamaisondemarielouise@gmail.com

**Hardware**  
**Granger**  
152 Grande rue  
+33 (0)4 50 34 41 91  
quincagranger@orange.fr  
www.granger-deco.com

**Games & toys**  
**La Courterie**  
64 avenue Cognacq Jay  
+33 (0)4 50 34 94 11  
lacourteriedesamoens@gmail.com  
FB : lacourteriedesamoens

**Clothing**  
**Dressing de Christelle**  
(from 36 to 52)  
29 Grande rue  
+33 (0)9 81 65 27 58  
+33 (0)6 33 85 68 07  
dressingdechristelle@gmail.com



**Popcorn Vintage**  
+33 (0)6 63 83 60 93  
contact@popcorn-vintage.com  
www.popcorn-vintage.com

**Technical clothing**  
**and sports equipment**  
**Intersport village**  
84 route de la Piaž  
+33 (0)4 50 34 40 51  
contact@samoens-intersport.com  
www.samoens-intersport.com

**Fashion jewellery**  
**& accessories**  
**Mon p'tit bijou**  
30 Grande rue  
+33 (0)4 50 90 72 13  
monptitbijou74@gmail.com

## SERVICES

**Real estate agencies**  
**Transactions**  
**Agence du Giffre**  
15 avenue du Giffre - BP 12  
+33 (0)4 50 34 41 14  
info@agence-du-giffre.com  
www.agence-du-giffre.com

**Agence Immo 2 000**  
**Transactions**  
Rue des billets  
+33 (0)4 50 34 99 67  
contact@immo-samoens.com  
www.immo-samoens.com

**Nicolas Thibon Immobilier**  
**Samoëns- Agence du**  
**Groups Thinon Immobilier**  
77 rue des Glaciers  
+33 (0)4 50 53 60 99  
immobilier@laurainne.com  
www.lidi-samoens.fr

**Real estate**  
**sales agent**  
**Starling Alexia - Alpine**  
**Property**  
165, rte. de Vallon d'en Bas  
+33 (0)6 47 32 08 81  
+33 (0)4 26 10 10 72  
lexie@alpine-property.com  
alpine-property.fr/samoens

**Banks and ATMs**  
**Banque Populaire des**  
**Alpes**  
Immeuble les Campanules  
202 Grande rue  
+33 (0)4 50 47 49 86  
audrey.boutry@bpaura.fr

**Crédit Agricole des Savoie**  
48, rue Cognacq-Jay  
+33 (0)4 50 19 40 17  
sophie.blanchet@ca-des-savoie.fr

**French / English**  
**training centre**  
**Alpine French School /**  
**Alpine English Samoëns**  
74 place des Dents Blanches  
+33 (0)6 50 24 03 33  
www.alpine-english.com/  
samoens

**Carpenters/**  
**Woodworkers**  
**SARL Pegorier Charpente**  
1255 rte. de Taninges - Les Sages  
+33 (0)6 03 75 70 96 (All the day)  
+33 (0)4 50 55 94 77  
(8.30am-12pm and 1.30pm-6pm)  
b.pegorier@  
pegoriercharpente.fr  
www.pegoriercharpente.fr

**Concierge service**  
**Locagiffre Conciergerie**  
253 imp. des Chardons Bleus  
+33 (0)7 57 83 97 99  
contact@locagiffre.com  
www.locagiffre.com

**Car breakdown service**  
**Grand Massif Dépannage**  
+33 (0)4 50 98 60 21  
+33 (0)7 70 59 58 47  
grandmassifdepannage@gmail.com

**Garage**  
**Garage Baudet**  
Avenue Cognacq-Jay  
+33 (0)4 50 34 43 82  
garage.baudet@wanadoo.fr

**Graphic designer**  
**Illustrator**  
**Tao Création**  
Impasses des Terrasses  
+33 (0)6 34 06 27 57  
tao.creation83@gmail.com  
www.taocreation.fr

**Computer scientist**  
**Informatique Du Haut**  
**Faucigny (IDHF)**  
759 route de Vigny - Les Revés  
+33 (0)6 83 19 87 73  
+33 (0)9 53 71 80 61  
info@idhf.fr

**Laundry / Pressing**  
**Le Lavoir**  
34 route de la Piaž  
+33 (0)6 03 70 83 23  
+33 (0)4 50 98 64 42  
lelavoir.samoens@hotmail.fr

**Blanchisserie et**  
**Pressing du Giffre**  
ZA l'Épure  
Les Hottes Ouest, Verchaix  
+33 (0)4 50 90 18 80 (Laundry)  
+33 (0)4 50 90 19 43 (Pressing)  
pressingdugiffre@orange.fr  
blanchisserie-du-giffre@orange.fr

**Photographer**  
**Milleimages**  
Les Billets  
85 route du Grand Massif  
+33 (0)6 84 15 23 07  
milleimages74@gmail.com  
milleimagesphotographie.  
webnode.fr

**Internet**  
**Point Internet Wifi**  
**(Tourist Office)**  
66 place de l'Office de  
Tourisme  
+33 (0)4 50 34 40 28  
infos@samoens.com  
www.samoens.com

**Radio**  
**Radio Giffre**  
75 rue de la Gare  
+33 (0)4 50 34 47 48  
+33 (0)6 42 20 04 72  
contact@radiogiffre.com  
www.radiogiffre.com





## OUR HOLIDAY PACKAGES

# ENJOY the adventure

### ALL TYPES OF ACCOMMODATION

- Apartment
- Chalet
- Hotel
- Tourist Residence
- Bed and Breakfast
- Gîte
- Holiday village
- Holiday Centre
- Rental residence
- Open air accomodation

### ALL TYPES OF STAYS

- Week-end, week and more
- All inclusive stays

### "À LA CARTE" SERVICES

Accommodation or accommodation/activity package



### BOOKING SAMOËNS

reservation@samoens.com

+33 (0)4 50 78 62 50

www.reservation.samoens.com



## AMERICAN FESTIVAL

From 24/06 to 01/07

- FURNISHED APPARTMENT accommodation
- COUNTRY DANCE workshop

Week from 420€/person



## WELL-BEING

The stay offer includes :

- FURNISHED APPARTMENT accommodation
- A 30 minute discovery MASSAGE
- One AFGHAN WALK per person

Week from 270€/person



## HANDISPORT

The stay offer includes :

- FURNISHED APPARTMENT accommodation adapted for people with reduced mobility
- 1 PARAGLIDING flight

Week from 390€/person



## MOUNTAIN ACTIVITIES

The stay offer includes :

- FURNISHED APPARTMENT accommodation
- CANORAFT or AIRBOAT trip

Week from 220€/person



## ACCOMMODATION

### Legend of PICTOGRAMS



restaurant



catering or breakfast



swimming pool



relaxation area  
*(spa / sauna / jacuzzi)*



disability access



pets allowed



home bike



holiday vouchers



Accommodations that are members of the reservation service, with easy online and telephone reservations.  
**Up-to-date availability and prices.**

## BOOK YOUR STAY DIRECTLY

**BOOKING SAMOËNS**  
reservation@samoens.com  
+33 (0)4 50 78 62 50  
www.reservation.samoens.com



## TOURIST HOTELS

*In the heart of the Alps, enjoy the comfort of traditional family hôtels. Benefit from all-inclusive service, a personal welcome and high quality comfort.*



### \*\*\*\* Hôtel-Chalet Neige et Roc 43 rooms and 5 suites (in 2 buildings)



255 route de Taninges  
+33 (0)4 50 34 40 72  
resa@neigeetroc.com  
GPS : LON 6,719159 - LAT 46,084528

Double room night	from 115 to 215€
Suite 2/4 pers. night	from 250 to 295€
Breakfast supplement	from 10 to 18€
Half-board supplement	from 27 to 55€



Charming hotel nestled in the heart of the mountains. Françoise and Olivier welcome you with conviviality for a tender or vitaminized stay! Restaurant, tennis, park of 1 hectare, 2 swimming pools covered and outside, Spa, sauna, hammam, Jacuzzi, gaming room.

www.neigeetroc.com

### \*\*\*\* Hôtel Alexane 33 suites



20 avenue du Giffre  
+33 (0)4 50 78 64 20 alexane@mgm-groupe.com  
GPS : LON 6,72343 - LAT 46,0822

Deluxe room	from 126€
Comfort suite	from 207€
Family suite	from 228€
Executive suite duplex	from 297€

Rate per night for 7 nights



The hotel\*\*\*\* Alexane offers 33 suites with a focus on comfort and authenticity. The hotel also offers a lounge bar, a restaurant and a Montagnes du Monde® Spa of more than 1000m2 with swimming pool, whirlpool, sauna, hammam, Nordic bath, sensory shower and fitness room.

www.alexane-hotel-spa.com

BOOK YOUR STAY DIRECTLY



reservation@samoens.com  
+33 (0)4 50 78 62 50  
www.reservation.samoens.com

### \*\*\*\* Annexe de l'hôtel Neige et Roc 14 flats with kitchenette for 2 to 6 people



255 route de Taninges  
+33 (0)4 50 34 40 72  
resa@neigeetroc.com  
GPS : LON 6,718611 - LAT 46,083948

Night	from 115 to 295€
Room 2/3 pers. week	from 1400 to 1750€
Room 4/5 pers. week	from 1600 to 1950€
Breakfast	from 10 to 18€



A charming chalet, with a subtle combination of wood and fabrics in warm tones, it combines charm and refinement. Restaurant, tennis court, 1 hectare of parkland, 2 indoor and outdoor swimming pools, spa, sauna, hammam, Jacuzzi, so many assets for a successful and relaxed stay!

www.chalet-studios-neigeetroc.com



## TOURIST HOTELS

### \*\*\* Hôtel le Gai Soleil

31 rooms including 11 suites (divided into 2 buildings)



26 route de Taninges  
Le Bourg  
+33 (0)4 50 34 40 74  
hotel.gai-soleil@wanadoo.fr  
GPS : LON 6,722345 - LAT 46,084513

Double room night	from 75 to 125€
Studio 2 pers. week	from 555 to 855€ (3/4 pers.: consult us)
Breakfast buffet	15€
Half-board supplement	45€

Children under 12 years free of charge on half board



Located in the heart of the village, our hotel combines charm and tradition. Lounge, bar, terrace, large garden of 1500 m<sup>2</sup>. Free relaxation area: heated indoor swimming pool, jacuzzi, hammam, sauna, games room, fitness room, salt cave.

[www.hotel-samoens.com](http://www.hotel-samoens.com)

### \*\*\*\* Hôtel les Glaciers

41 rooms



143 Grande Rue  
+33 (0)4 50 34 40 06  
contact@hotellesglaciers.com  
GPS : LON 6,724319 - LAT 46,083858

Single room	from 90 to 110€
Double/twin room week	from 110 to 170€
Triple room	from 140 to 200€
Quadruple room	from 170 to 210€

Breakfast included in the room price



Our hotel is ideally located in the heart of the village of Samoëns, where wood and stone blend perfectly. You will find a swimming pool, a tennis court, a sauna, a private garden, not forgetting the S'pacerapertif, our outdoor lounge bar where you can enjoy a mojito and tapas in a musical atmosphere.

[www.hotellesglaciers.com](http://www.hotellesglaciers.com)



## TOURIST HOTELS

### \*\*\* Lodge le Grand Cerf

9 suites



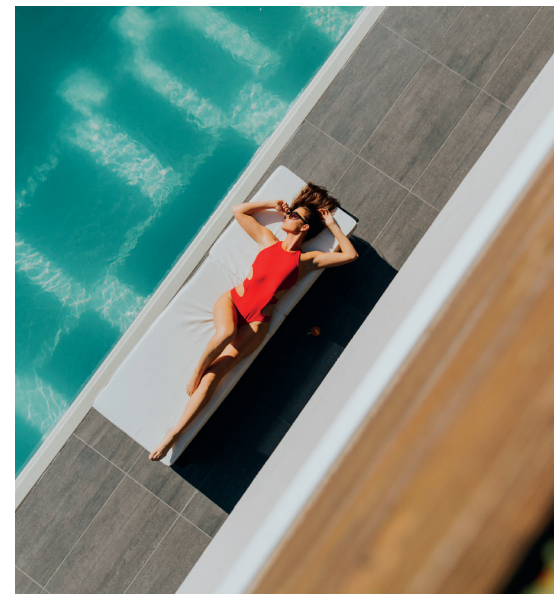
26 route de Taninges  
Le Bourg  
+33 (0)4 50 34 40 74  
hotel.gai-soleil@wanadoo.fr  
GPS : LON 6,722345 - LAT 46,084513

Junior Suite 2/3 pers. junior - nuitée	from 96 to 160€
Family suite 4/5 pers. with kitchenette	from 150 to 240€
Breakfast buffet	15€
Half-board supplement	45€



Luxurious chalet with 9 suites, with south facing terrace and mountain view, located in the heart of the village. Large garden of 1500 m<sup>2</sup>. Free relaxation area: heated indoor swimming pool, jacuzzi, hammam, sauna, games room, fitness room.

[www.hotel-samoens.com](http://www.hotel-samoens.com)



### \*\* Hôtel La Boule de Neige

21 rooms



220 chemin des Bollus  
Vercland  
+33 (0)4 50 34 44 58  
hotelrestlabouledeneige@wanadoo.fr  
GPS : LON 6,701488 - LAT 46,073201

Double room	from 82 to 89,50€
Room for 3 persons	from 100 to 112€
Breakfast	from 9 to 13€
Half-board	from 75 to 80€



The hotel welcomes you in the heart of the Haut-Savoie mountain pastures in the hamlet of Vercland, only 2 km from the village on the road to Samoëns 1 600, in a quiet location. Wifi in all rooms. Free on-site parking. Electricity terminals.

[www.labouledeneige.com](http://www.labouledeneige.com)

### \*\* Hôtel l'Edelweiss

20 rooms



La Piaz  
+33 (0)4 50 34 41 32  
hotel-edelweiss@wanadoo.fr  
GPS : LON 6,715967 - LAT 46,088708

Double room	from 100 to 115€
Room 3/4 pers.	from 140 to 185€
Breakfast	13€
Half-board	from 93 to 104€



This Savoyard chalet-style hotel with terrace offers panoramic views of the village, just 1 km from the centre.

[www.edelweiss-samoens.com](http://www.edelweiss-samoens.com)





## TOURIST RESIDENCIES

The tourist residences in Samoëns offer you the advantage of a permanent and personalised welcome, while enjoying the independence of a flat. They offer many guaranteed services depending on the location: possibility of breakfast and short stays, fitness area...



BOOK  
YOUR STAY  
DIRECTLY

RESERVATION  
Samoëns

reservation@samoens.com  
+33 (0)4 50 78 62 50  
www.reservation.samoens.com

### \*\*\*\*\* Résidence Alexane 31 apartments



20 avenue du Giffre  
+33 (0)4 50 78 64 20  
alexane@mgm-groupe.com  
GPS : LON 6,72343 - LAT 46,0822

2 pieces 4 pers.	from 901€
3 pieces 6 pers.	from 1036€
4 pieces 8 pers.	from 1243€

Weekly rate from Saturday to Saturday



The residence \*\*\*\*\* Alexane, with its warm and intimate atmosphere, welcomes you in the heart of the village and close to the slopes. For your moments of relaxation, take advantage of the innovative 1000m<sup>2</sup> Wellness Centre and enjoy a unique sensory experience.

www.mgm-hotels-residences.com



## TOURIST RESIDENCIES

### \*\*\* Résidence Arts et Vie 80 apartments



339 route du Grand-Massif  
+33 (0)4 50 34 97 78  
+33 (0)11 40 43 20 21  
samoens@artsetvie.com  
GPS : LON 6,719159 - LAT 46,084528

2-4 pers.	from 240 to 530€
4-6 pers.	from 290 to 680€

Animal supplement: 25€/day.  
Weekly rate



500 m from the village, family residence with great comfort: calm, large shaded park, games for children, tennis courts, football, volleyball, basketball, programme of free guided hikes, activities, outings, warm welcome and advice for your stay...

www.artsetvie.com



### \*\*\*\* CGH Résidence & Spas "Les Chalets de Layssia" 55 apartments



19 place des Sept-Monts  
+33 (0)4 50 33 10 96 (Ancey booking centre)  
+33 (0)4 50 91 76 77 (direct - reception)  
layssia@cgh-residences.com

GPS : LON 6,72286 - LAT 46,083478

2 pieces 4 pers.	from 574€
3 pieces 6 pers.	from 479€
4 pieces 8 pers.	from 777€
5 pieces 10 pers.	from 1036€

Animal supplement: 65€/day.  
Weekly rate



In the centre of the village, this luxury residence welcomes you in fully equipped flats combining charm and comfort. Take advantage of the heated indoor swimming pool with solarium, children's pool, whirlpool, sauna, hammam and spa Ô des Cimes.

www.cgh-residences.com

### \*\*\*\* CGH Résidence & Spa "La Reine des Prés" 80 apartments



132 route du Grand-Massif  
+33 (0)4 50 33 10 96 (booking centre)  
+33 (0)4 50 78 01 77 (direct - reception)  
reine@cgh-residences.com  
GPS : LON 6,725392 - LAT 46,079631

2 pieces 4 pers.	from 539€
3 pieces 6 pers.	from 637€
4 pieces 8 pers.	from 735€
5 pieces 10 pers.	from 973€

Animal supplement: 65€/day.  
Weekly rate



Stay in the heart of the Grand Massif in beautiful chalets where the modern flats are spacious and well appointed. Escape to the Ô des Cimes spa and relaxation area with heated swimming pool, hot tubs, sauna and hammam.

www.cgh-residences.com

### \*\*\* Résidence La Cour - Dahu Compagnie 17 apartments



385 chemin de la Cour  
+33 (0)4 50 34 92 96  
info@dahu1951.com  
GPS : 6,724491 - LAT 46,080048

Studio 2 pers.	from 329€
Apartment 4 pers.	from 553€
Apartment 4/6 pers.	from 637€
Apartment 8 pers.	from 700€

Weekly rate (for information only)



A small path will lead you from the village centre to our residence-spa, situated in the heart of a large park with swimming pool. Push the doors of this house, where you can live like at home. For a week or a few nights, enjoy your getaway to the full.

www.dahu1951.com

### Résidence Club mmv Samoëns Village



466 route des Drugères  
+33 (0)4 92 12 62 12  
courrier@mmv.fr  
GPS : LON 6,718430 - LAT 46,079444

Apartment 4pers.	from 413 to 1050€
Apartment 6 pers.	from 455 to 1568€
Apartment 8 pers.	from 644 to 2072€
Apartment 10 pers.	from 805 to 2100€

Weekly rate



Located in the centre of the village and its activities, you are also just a stone's throw from the Lac aux Dames, the leisure centre and its many facilities. To delight the youngsters, there are children's clubs from the age of 4 and the Squ@t for teenagers up to the age of 17: mountain activities, unusual leisure activities and outdoor games.

www.mmv.fr



## TOURIST RESIDENCIES

### \*\*\* Résidence Lagrange Vacances - Les Fermes de Samoëns 120 apartments



347 chemin de Sur-La-Ville - Les Beules  
+33 (0)4 50 18 12 20 (accommodation)  
+33 (0)892 160 500 (reservation 0,40€/min.)  
samoens@lagrange-holidays.com  
service.client@lagrange-holidays.com  
GPS : LON 6,729898 - LAT 46,077875

Studio 2 pers.	from 225 to 705€
Apartment 4 pers.	from 260 to 810€
Apartment 6 pers.	from 280 to 880€
Apartment 8/10 pers.	from 315 to 1220€

Weekly rate



800m from the village centre, 400m from the shops and 200m from a mountain bike track, this residence welcomes you in an authentic and harmonious setting. Outdoor swimming pool + heated indoor pool, sheets and towels included. Sauna/hammam, wifi for a fee.

[www.vacances-lagrange.com](http://www.vacances-lagrange.com)

### \*\*\* Résidence la Renardière 34 apartments



93 chemin des Forestiers  
+33 (0)4 50 34 45 62  
contact@renardiere.com  
GPS : LON 6,718934 - LAT 46,085674

Night 2/6 pers. Minimum 2 nights	from 90 to 240€/nuit
Apartment 2 pers. 1 week	from 600 to 720€
Apartment 3/4 pers. 1 week	from 640 to 980€
Apartment 5/6 pers. 1 week	from 760 to 1400€



Small residence\*\*\* with mountain decor and access to the SPA: 2 heated indoor and outdoor pools (summer), jacuzzi, sauna, hammam, massages and treatments. "À la carte" stay with hotel services.

[www.renardiere.com](http://www.renardiere.com)



## BED AND BREAKFAST

*In the heart of the Alps, live in a house of character where you will find a cosy and cocooning atmosphere, for a holiday in the mountains as we dream of it...*



### La Ferme d'en Bas 4 rooms



Vallon d'en Bas  
+33 (0)6 83 59 91 13  
+33 (0)4 50 34 95 32  
vallonsdenbas@gmail.com  
GPS : LON 6,74096 - LAT 46,075627

Double room with breakfast	98€
Supplement	adult : 41€ child : 23€
Meal	adult : 25€ child : - - 12 year : 15€ from 13 to 16 years : 20€



This old farmhouse has been lovingly restored and is equipped with an outdoor hot tub. You can go hiking in the mountains directly from the farm.

[www.vallonsdenbas.com](http://www.vallonsdenbas.com)

BOOK  
YOUR STAY  
DIRECTLY

RESERVATION  
Samoëns

reservation@samoens.com  
+33 (0)4 50 78 62 50  
www.reservation.samoens.com

### Les Fontaines 1 room



589 route des Fontaines  
+33 (0)6 61 16 43 62  
roger.curnier@wanadoo.fr  
GPS : LON 6,73831 - LAT 46,090079

Double room with breakfast from 58€



Beautiful guest room for 2 persons of 22 m², attic and decorated with care. You will appreciate the comfort, the calm and the large outdoor Jacuzzi to relax after a day of skiing or hiking.

[www.gitedesfontaines.com](http://www.gitedesfontaines.com)



BOOK  
YOUR STAY  
DIRECTLY

RESERVATION  
Samoëns

reservation@samoens.com  
+33 (0)4 50 78 62 50  
www.reservation.samoens.com



## STOPOVER AND HOLIDAY GÎTES

Enjoy the perfect place for a holiday with family or friends in a friendly, authentic and low-budget collective accommodation. A popular stopover for hikers too.



BOOK YOUR STAY DIRECTLY



reservation@samoens.com  
+33 (0)4 50 78 62 50  
www.reservation.samoens.com

### Gîte les Moulins 15 beds



710 route des Moulins  
+33 (0)6 10 98 14 65  
gitedesmoulins@aol.com  
GPS : LON 6,73427 - LAT 46,085298

Night	from 22 to 24€
Week-end	from 240 to 286€
Week	from 900 to 1300€



Mireille, a mountain guide, welcomes you to her gîte 800 m from the village centre. Free management. For small groups or individuals. Gîte with a well-equipped kitchen, dishwasher, washing machine, tumble dryer, 4 bedrooms.

www.gitedesmoulins.com

### Centre de vacances Alticlub 46 beds



1097 plateau des Saix - Samoens 1600  
+33 (0)6 43 69 85 51  
+33 (0)6 31 15 08 37  
alticlub1600@orange.fr  
GPS : LON 6,696382 - LAT 46,04768

Prices for stays on quotation.  
Youth and sport / national education accreditation.

Ski in, ski out chalet at 1600m altitude, ideal for full board, half board or self catering. No neighbours around and direct access to the ski lifts. Aurel & Camille welcome you in a family and friendly atmosphere in the heart of the Grand-Massif. They will be on site to meet your expectations.

www.alticlub1600.fr



## HOLIDAY VILLAGES

Particularly suitable for families and groups, the holiday villages in Samoens offer all-inclusive stays: accommodation, activities... while providing a certain level of comfort in the rooms.



### AEC Vacances Les Becchi 109 rooms



\*\*\* AEC Vacances Les Becchi  
239 route du Grand-Massif  
+33 (0)4 50 02 90 74 (Réservation)  
contact@aec-vacances.com  
lesbecchi@aec-vacances.com  
GPS : LON 6,726833 - LAT 46,078381

Group price	from 20 pers.
3 months - 15 years	degressive rates
- 3 months	free



Located 300 m from the centre of Samoens and the Grand Massif Express cable car, our holiday village welcomes you in an authentic setting with a 600m² water park in a tropical atmosphere.

www.aec-vacances.com

BOOK YOUR STAY DIRECTLY



reservation@samoens.com  
+33 (0)4 50 78 62 50  
www.reservation.samoens.com

### Village Club Cap France Le Bérouze

58 rooms including 4 for people with reduced mobility



\*\*\*\* Village vacances Cap France  
Le Bérouze  
375 route de Taninges  
+33 (0)4 50 34 42 09  
contact@leberouze.com  
GPS : LON 6,717153 - LAT 46,085227

Full board 1 week	from 511 to 833€
Children from 3 to 15	-10 to -30%
- 3 years	Free



In the heart of the village, stays with entertainment for individuals, families and groups. Optional: hiking, sports and cultural activities, tourist excursions... During the school holidays: nursery, children's and teenagers' clubs, mountain activities for adults. New: reception and seminar room, indoor swimming pool.

www.leberouze.com

### Club Med 420 rooms



⚔⚔⚔⚔ Club Med  
3868 route des Saix  
Samoens 1600  
+33 (0)4 50 78 60 00  
gmaccrec01@clubmed.com  
GPS : LON 6,702307 - LAT 46,054538



Perched at an altitude of 1600m, our 4 Trident Resort is located on a preserved and natural site. Modern equipment and design, children's club, activities (fitness, mountain biking, hiking...), 360° view to offer you unforgettable holidays in the mountains.

www.clubmed.fr





## HOLIDAY CENTRES

They offer group accommodation. A good plan for a mountain stay at low prices, in group!



### Les Fermes de Vercland 185 beds



727 route de Chez-Remand - Vercland  
+33 (0)4 50 34 42 32  
+33 (0)6 73 81 60 75  
jeanlouis@lesfermesdevercland.com  
GPS : LON 6,711805 - LAT 46,071568

Night with breakfast	from 21,90€
Half-board	from de 34€
Full board	from 43€



In Samoëns in Haute-Savoie, our holiday centre Les Fermes de Vercland welcomes you all year round! Spread over 5 chalets, 185 beds to welcome you as a family or group, for a week or a weekend.

[www.lesfermesdevercland.com](http://www.lesfermesdevercland.com)



BOOK YOUR STAY DIRECTLY

RESERVATION Samoëns

reservation@samoens.com  
+33 (0)4 50 78 62 50  
[www.reservation.samoens.com](http://www.reservation.samoens.com)



## OPEN-AIR ACCOMMODATION

An ideal location for a nature holiday and a low-cost stay in the mountains, while enjoying all the activities of Samoëns (close to the leisure centre and the Grand Massif Express cable car)!



### \*\*\* Camping Le Giffre



1064 route du Lac aux Dames  
La Glière  
+33 (0)4 50 34 41 92  
camping.samoens@wanadoo.fr  
GPS : LON 6,71771 - LAT 46,077012

Emplacement 2 persons	from 15,60 to 23€
Electricity / day 6 or 10amp	from 3,80 to 10€
1 week Bungalow or Mobil-home	from 200 to 685€
Week-end Bungalow or Mobil-home	76€



This 3-star campsite is located on the leisure park, near the town centre and access to the various activities, and offers numerous activities in summer, as well as an inflatable play area for children. New : Come and spend your holidays in one of our 2 person caravans.

[www.camping-samoens.com](http://www.camping-samoens.com)

BOOK YOUR STAY DIRECTLY

RESERVATION Samoëns

reservation@samoens.com  
+33 (0)4 50 78 62 50  
[www.reservation.samoens.com](http://www.reservation.samoens.com)

### Borne Flot Bleu



1064 route du Lac aux Dames  
+33 (0)4 50 34 41 92  
camping.samoens@wanadoo.fr  
GPS : LON 6,718397 - LAT 46,076982

Price

6€

Provision of a Flot Bleu terminal which allows motorhome owners to empty «grey water» and «black water», to distribute water and to supply electricity. Accessible 24 hours a day, 7 days a week.

[www.camping-samoens.com](http://www.camping-samoens.com)

### \*\*\* Mobil homes rental



1064 route du Lac aux Dames  
+33 (0)6 16 19 60 00  
contact@chevrot-loisirs.com  
GPS : LON 6,717882 - LAT 46,076952

Mobilhome

from 260 to 842€

Weekly rate

Mobile home rental open all year round. 2 or 3 bedroom mobile homes for up to 8 people. Campsite close to the activities on offer, ideal location. Rental by the night, weekend, week or any period on request.

[www.chevrot-loisirs.com](http://www.chevrot-loisirs.com)



## RENTAL RESIDENCES

The «rental residences» (unofficial name) consist of a minimum of 5 flats managed by a single owner.



### Résidence Les Glaciers



40 rue de la Gare  
+33 (0)4 50 34 40 06  
contact@residencelesglaciers.com  
GPS : LON 6,723555 - LAT 46,082743

Studio 3 pers.	from 371 to 575€
2 pieces 4 pers.	from 476 to 672€
2 pieces 5 pers.	from 507 to 707€
3 pieces 4 pers.	from 574 to 721€

Weekly rate



Residence of 10 furnished apartments classified 3 stars located in front of the tourist office and 30 m from the nursery. All shops nearby.

[www.residencelesglaciers.com](http://www.residencelesglaciers.com)

BOOK YOUR STAY DIRECTLY

RESERVATION Samoëns

reservation@samoens.com  
+33 (0)4 50 78 62 50  
[www.reservation.samoens.com](http://www.reservation.samoens.com)



## RENTAL RESIDENCES

### Résidence Le chalet des Granges



62 avenue des Loisirs  
Le Bourg  
+33 (0)4 50 34 40 74  
maurice.coffy@wanadoo.fr  
GPS : LON 6,721659 - LAT 46,083799

Appt. 2/4 pers. 35m <sup>2</sup>	from 385 to 680€
Appt. 4/5 pers. 55m <sup>2</sup>	from 455 to 755€
Appt. 4/6 pers. 58m <sup>2</sup>	from 495 to 850€
Appt. 6/8 pers. 64m <sup>2</sup>	from 635 to 1130€

Weekly rate.

Possibility of short stay according to period



Chalet with Savoyard charm composed of 8 cosy flats, situated in a large 3,000 m<sup>2</sup> park in the heart of the village. The Chalet des Granges is 150 m from the tourist office. Free access to the heated swimming pool, jacuzzi and sauna.

[www.appartement-samoens.com](http://www.appartement-samoens.com)

### Résidence Flor'Alp



126 avenue Cognacq-Jaÿ  
+33 (0)4 56 37 45 47  
+33 (0)6 85 02 75 21  
contact@residence-floralp.com  
GPS : LON 6,72389 - LAT 46,082757

Furnished 2-3 pers. 52m <sup>2</sup>	from 350 to 600€
Furnished 4-5 pers. 65m <sup>2</sup>	from 500 to 700€
Apartment 8-10 pers. 110m <sup>2</sup>	from 800 to 1100€

Possibility of short stays in the apartment.  
2 to 3 persons : please contact us.



5 furnished apartments with 3-star rating. Close to all services, spacious flats of great comfort, from 52 to 110 m<sup>2</sup>. Open all year round. Private parking and garage. Sheets provided. Wifi access. Stay from Sunday to Sunday for the T2 and T3, from Saturday to Saturday for the T5.

[www.residence-floralp.com](http://www.residence-floralp.com)

BOOK YOUR STAY DIRECTLY

RESERVATION Samoëns

reservation@samoens.com  
+33 (0)4 50 78 62 50  
[www.reservation.samoens.com](http://www.reservation.samoens.com)

### SARL Lou Izès - Résidence Le Corzolet



218 route des Mouilles  
+33 (0)4 50 34 46 97  
andrePELLISSIER@wanadoo.fr  
GPS : LON 6,719888 - LAT 46,086857

Furnished 3-4 pers.	from 320 to 650€
Furnished 8 pers.	from 550 to 850€
Chalet 4 pers. Le Lavallon	from 450 to 690€
Chalet 11 pers. Le Dahu	from 1200 to 1850€

Weekly rate



5 furnished 3-stars apartments. The Pellissier family offers very comfortable flats with all the amenities you would expect. You can also find their 4-star chalets also located in the village. Rentals from 2 to 12 people.

[www.location-pellissier.com](http://www.location-pellissier.com)

### Chalet L'Aéro



Plateau des Saix  
+33(0)4 50 54 73 79  
contact@aero1607.com  
GPS : LON 46,05325 - LAT 6,696038

Double room with breakfast	from 74 to 143€
Room 4 pers. 1 night	from 111 to 143€
Suite 2-4 pers. 1 week	from 696 to 997€
Suite 6 pers. 1 week	from 997 to 1600€

Located in Samoëns 1 600 on an exceptional site in the heart of a mountain pasture, the Aero has a panoramic view of the Giffre valley. Spacious and comfortable accommodation. 5 rooms, 6 suites. Accessible by car.

[www.aero1607.com](http://www.aero1607.com)



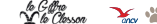
### Résidence Giffre et Clesson - Dahu Compagnie



432-434 avenue du Giffre  
+33 (0)4 50 34 92 96  
info@dahu1951.com  
GPS : LON 6,72123 - LAT 46,080108

Studio 2-3 pers.	from 266€
Apartment 4 pers.	from 357€
Apartment 6-8 pers.	from 441€
Apartment 8-10 pers.	from 539€

Weekly rate (for information only)



Our apartments for 2 to 10 people welcome you for your stay in the mountains in all simplicity. Located at the entrance of the village, enjoy the open view from your south facing balcony, bike room, parking. Possibility of short stays and facilities for groups.

[www.dahu1951.com](http://www.dahu1951.com)



## RENTAL RESIDENCES

### Résidence Terresens Le Pré d'Anne Chloé



Lieu-dit Les Moulins  
+33 (0)4 28 38 48 85  
booking@terresens.com  
GPS : LON 6,721659 - LAT 46,083799

2 pieces 4-6 pers. 46m <sup>2</sup>	from 720 to 1800€
3 pieces 4-6 pers. 59m <sup>2</sup>	from 800 to 2030€
5 pieces 8-10 pers. 86m <sup>2</sup>	from 1350 to 3300€
6 pieces 10-12 pers. 92m <sup>2</sup>	from 1600 to 3950€

Weekly rate



This small residence, divided into 3 chalets, offers 9 flats for 4 to 12 people. All apartments have a terrace or a balcony.

[www.appartement-samoens.com](http://www.appartement-samoens.com)

### Résidence La Maison de la Régence



70 place des dents blanches  
Le Bourg  
+33 (0)4 50 96 64 80  
+33 (0)6 61 86 43 42  
+33 (0)4 50 10 10 11  
(gite de france booking centre)  
contact@ab-location.com  
GPS : LON 6,728306 - LAT 46,083587

Apartment 5 pers. 76m <sup>2</sup>	from 690 to 850€
Apartment 5 pers. 80m <sup>2</sup>	from 690 to 850€
Apartment 7 pers. 100m <sup>2</sup>	from 850 to 1040€

Prices/apartments per week

Old historical house from 1660 located near the town hall, consisting of 5 three-star flats with 2 bathrooms and 2 separate toilets. Beds made. Parking 200 m<sup>2</sup>, park 500 m<sup>2</sup>, open view on the mountains. 6 or 8 beds available on request.

[www.ab-location.com](http://www.ab-location.com)

BOOK  
YOUR STAY  
DIRECTLY

RESERVATION  
Samoëns

reservation@samoens.com  
+33 (0)4 50 78 62 50  
www.reservation.samoens.com



### Résidence Maison Salina-Pellissier



15 Grande Rue  
+33 (0)4 50 34 43 07  
contact@samoens-location.com  
GPS : LON 6,725779 - LAT 46,083531

Studio 2 pers.	from 320 to 390€
Studio 4 pers.	from 320 to 390€
Apartment 4 pers.	from 320 to 490€
Apartment 6 pers.	from 300 to 499€

Weekly rates, fortnightly discounts, short stays possible



5 spacious and bright flats in a renovated house in the heart of the resort of Samoëns, close to the shops and sports and cultural activities. A family welcome awaits you for your stay in Samoëns.

[www.samoens-location.com](http://www.samoens-location.com)



## REAL ESTATE AGENCIES

Specialists in rental with cards and professional guarantees, the agencies provide a complete service to tenants during their stay. They offer a wide choice of rentals, all-inclusive stays and special offers.

### AGENCE DU GIFFRE



15 avenue du Giffre / BP12  
+33 (0)4 50 34 41 14  
location@agence-du-giffre.com  
info@agence-du-giffre.com

The Giffre agency offers: transactions, rental management and holiday rentals (weekend, week and year), about 100 rentals (flats, chalets) from 2 to 15 people and all year round. Organisation of all-inclusive or personalised holidays. Cancellation insurance.

[www.agence-du-giffre.com](http://www.agence-du-giffre.com)

### AGENCE IMMO 2000



Résidence Samoëns Soleil  
+33 (0)4 50 34 99 67  
contact@immo-samoens.com

#### RENTAL - TRANSACTION - CONCIERGE

The Immo 2000 agency offers a range of rental properties from studios to top of the range chalets. Possibility of short stays outside school holidays. We offer a concierge service / handing over the keys to the owners.

[www.immo-samoens.com](http://www.immo-samoens.com)

### NICOLAS THIBON IMMOBILIER SAMOËNS



AGENCE DU GROUPE THIBON IMMOBILIER  
77 rue des Glaciers - Galerie des Dents Blanches  
+33 (0)4 50 53 60 99  
immo.samoens@grouphetibon.com

#### TRANSACTION - RENTAL - CONCIERGE - NEW PROGRAMMES

Century 21 Thibon Immobilier, an agency of the Thibon Immobilier Group, is a team of efficient professionals at your disposal all year round to help you with your property projects.

[www.thibon-immobilier.com](http://www.thibon-immobilier.com)



## RECEPTIVE AGENCIES

These operators also have an excellent knowledge of the area and its service providers, as well as a knowledge of customers' expectations, which enables them to organise tailor-made holidays.

### Aereau voyages



Le Clos Pitton  
+33 (0)4 50 34 42 72  
info@alpes-seminaires.com

The Aereau agency is the leading agency in the Alps for the organisation of your seminars, incentives, conventions and all tailor-made corporate events. Advice, organisation and assistance.

[www.alpes-seminaires.com](http://www.alpes-seminaires.com)

### Alps Accommodation



35 clos du Clévioux  
+33 (0)4 50 98 50 56  
info@alpsaccommodation.com

Alps Accommodation offers 80 high quality flats and chalets for rent in Samoëns. All are well located, newly built or recently renovated with excellent facilities, pools, fireplaces, spas and saunas.

[www.alpsaccommodation.fr](http://www.alpsaccommodation.fr)





## PRIVATE RENTALS BY OWNER

Would you like to enjoy the pure mountain air, the peace and quiet of its sumptuous landscapes or the escape that the Giffre valley inspires? Look no further: Samoëns is where you will find your pied-à-terre. A considerable choice of rentals is available to you: flats, chalets, in the heart of the village of Samoëns or in one of its hamlets, you just have to make your selection. It's up to you!

### Legend of PICTOGRAMS

- parking
- garage
- garden
- balcony
- terrace
- wifi (free)
- relaxation area (swimming / spa / sauna / jacuzzi)
- pets allowed
- disabled access
- holiday vouchers



RESERVATION  
Samoëns

Accommodations that are members of the reservation service, with easy online and telephone reservations.  
**Up-to-date availability and prices.**

**BOOK YOUR STAY DIRECTLY**

**BOOKING SAMOËNS**  
reservation@samoens.com  
+33 (0)4 50 78 62 50  
[www.reservation.samoens.com](http://www.reservation.samoens.com)



## Samoëns Village

### STUDIOS

\*\*\* **Les Fontaines - Tuet** Cornier Christiane

35 m<sup>2</sup> / 4 pers. / Week : 280 > 420€  
589 route des Fontaines  
+33 (0)4 50 34 43 62 / +33 (0)6 61 16 43 62  
roger.cornier@wanadoo.fr  
www.gitedesfontaines.com

\*\*\* **Bellec Alain**

31 m<sup>2</sup> / 4 pers. / Week : 250 > 350€  
Les Sorbiers  
459 rue des Drugères  
+33 (0)6 09 36 91 26  
alainmoniquebellec@wanadoo.fr

\*\*\* **Amarillys 106** Lange-Gallet Josette

29 m<sup>2</sup> / 2 pers. + 1child / Price: see with the renter  
145 route des Billets  
+33 (0)6 64 93 65 42  
jo.gallet@orange.fr

\*\* **Septimontain A31** Bideau Pillault

20 m<sup>2</sup> / 4 pers. / Week : 250 > 330€ + 40€ cleaning charge / mini 3 nights  
appt 31 - Rue du Fer à Cheval  
+33 (0)2 47 73 11 65 / +33 (0)6 70 91 40 82 / +33 (0)6 42 32 05 98  
bideaupascal@wanadoo.fr  
pagesperso-orange.fr/loc.samoens

\*\* **La Grenette 207**

21 m<sup>2</sup> / 4 pers. / Week : 350 > 500€  
7 rue des Billets  
+33 (0)4 50 89 46 40 / +33 (0)7 70 93 09 11  
yann.vaugeois@gmail.com

\*\* **Bethanie 40** Collety Jean-Luc

25 m<sup>2</sup> / 4 pers. / Week : 275 > 650€  
Résidence Béthanie  
N°40 - Route de Lapiaz  
+33 (0)4 77 72 42 43 / +33 (0)6 03 11 02 75  
jlcollety@gmail.com

\*\* **Espaces-Lichens 205**

29 m<sup>2</sup> / 4 pers. / Price: see with the renter  
Résidence Les Espaces  
+33 (0)6 19 39 27 96 (as a priority) / +33 (0)3 21 94 43 05  
patricia.hagnere@orange.fr

\*\* **Etchelecou Antoine**

15 m<sup>2</sup> / 2 pers. / Week : 200 > 420€  
Les Dorines, studio n°202  
Résidence Les Espaces  
+33 (0)6 77 86 19 23 / +33 (0)2 47 63 15 73  
antoine.etcchelecou@sfr.fr

\*\* **La Grenette** Fernandes Fernanda

19 m<sup>2</sup> / 3 pers. / Week : 200 > 480€ / Night : 40 > 50€ /  
Week-end : 100 > 150€  
7 rue des Billets - Appartement 208  
+33 (0)4 50 89 46 40 / +33 (0)7 70 93 09 11  
ff74.fernandes@gmail.com

\*\* - **Espaces-Lichens 006** Poidevin Yvonne

27 m<sup>2</sup> / 4 pers. / Week : 300 > 600€  
Les Espaces, Lichens  
83 impasse des Chardons Bleus  
+33 (0)6 78 30 72 50 / +33 (0)1 46 38 99 32  
yvonne.poidevin@gmail.com

\*\* **Espaces-Lichens 306** Rigoux Yvette

28 m<sup>2</sup> / 4 pers. / Price: see with the renter  
Les Lichens  
+33 (0)4 50 37 08 79 / +33 (0)6 73 62 99 54  
yvette.rigoux@gmail.com

\*\* **Le carlina B23** Lemaire Caroline

20 m<sup>2</sup> / 3 pers. / Week : 240 > 490€  
112 route de Sixt  
+33 (0)1 45 93 96 40 / +33 (0)6 24 40 38 89  
carolemairebrondel@gmail.com







## PRIVATE RENTALS BY OWNER

Passy Michel



40 m<sup>2</sup> / 5 pers. / Price: see with the renter  
Le Bellevue  
+33 (0)4 50 98 26 52



Pegaz Christophe



45 m<sup>2</sup> / 5 pers. / Week: 450 > 750€  
306 avenue des loisirs, Bâtiment F, Appartement 1 +33 (0)6 15 16 10 11  
christophepegaz@gmail.com



Poya La Table de Fiffine



37 m<sup>2</sup> / 3 pers. / Week: 650 > 750€  
612 chemin de la Cour  
+33 (0)4 50 34 10 29  
latabledefiffine@orange.fr  
www.table-fiffine.com



Prudhomme Gérard



43 m<sup>2</sup> / 6 pers. / Week: 300 > 550€  
Les Dents-Blanches  
+33 (0)4 76 55 95 39 / +33 (0)6 86 92 27 63  
gemo.prudhomme@orange.fr



Schuler Ginette et Jean



32 m<sup>2</sup> / 6 pers. / Week: 350 > 700€  
Le Lavieu  
+33 (0)3 88 83 61 17 / +33 (0)6 85 18 09 22  
jean.schuler@gmail.com  
www.location.samoens.fr



Le Moëntieu Bertrand Jean-Claude



32 m<sup>2</sup> / 2/3 pers. / Week: 475€  
712 route de Plampraz  
+33 (0)6 50 25 18 29 / +33 (0)6 63 13 73 79  
jcberttrand74@aol.com



**BOOK YOUR STAY DIRECTLY**  
reservation@samoens.com  
+33 (0)4 50 78 62 50  
www.reservation.samoens.com

## LIVING ROOM & 2 BEDROOMS

\*\*\*\* Les Chalets d'Anais - Chalet Rose des Alpes 1 Barbier



88 m<sup>2</sup> / 6 pers. / Week: 850 > 1 285€  
90 route du Grand-Massif  
+33 (0)4 50 34 13 98  
contact@leschaletsdanais.fr  
www.leschaletsdanais.com



\*\*\*\* Les Chalets d'Anais - Chalet Rose des Alpes 2 Barbier



80 m<sup>2</sup> / 6 pers. / Week: 850 > 1 285€  
90 route du Grand-Massif  
+33 (0)4 50 34 13 98  
contact@leschaletsdanais.fr  
www.leschaletsdanais.com



\*\*\*\* Les Chalets d'Anais - Chalet Rose des Alpes 3 Barbier



70 m<sup>2</sup> / 4 pers. / Week: 850 > 1 285€  
90 route du Grand-Massif  
+33 (0)4 50 34 13 98  
contact@leschaletsdanais.fr  
www.leschaletsdanais.com



\*\*\*\* Arc-en-ciel Christine Bianco



72 m<sup>2</sup> / 4 pers. / Week: 550 > 840€  
4 route de Plampraz - Sous le crêt  
+33 (0)6 10 14 93 74  
christine@oratoirechalet.com  
www.locations-chalet-samoens.com



\*\*\*\* Céleste Christine Bianco



77 m<sup>2</sup> / 4 pers. / Week: 600 > 890€  
4 route de Plampraz - Sous le crêt  
+33 (0)6 10 14 93 74  
christine@oratoirechalet.com  
www.locations-chalet-samoens.com



\*\*\*\* Les Fontaines - Criou Cornier Christiane



50 m<sup>2</sup> / 5 pers. / Week: 350 > 540€  
589 route des Fontaines  
+33 (0)4 50 34 43 62 / +33 (0)6 61 16 43 62  
roger.cornier@wanadoo.fr  
www.gitedesfontaines.com



\*\*\*\* Chalet Yak & Yeti Violaine Simon



74 m<sup>2</sup> / 6 pers. / Week: 380 > 1000€  
Chalet Yak & Yeti - 501 route de Lachat  
+33 (0)6 45 35 13 28 / +33 (0)4 50 34 12 36  
helsimon@orange.fr  
www.chaletyakyetyeti.com



\*\*\* Apartment Luciole Carole Jourdan



43 m<sup>2</sup> / 5-6 pers. / Week: 506 > 714 €  
34 avenue du fer à cheval, Résidence La Bourgeoise  
+33 (0)6 76 52 55 66  
juliette.boess@orange.fr



\*\*\* Ecrins Etoilés C5 Lucie et Philippe Guillemaile



48 m<sup>2</sup> / 4 pers. / Week: 400 > 1000€  
42 route de Sixt  
+33 (0)3 25 37 34 41 / +33 (0)6 81 33 73 08  
lucieguille@wanadoo.fr



\*\*\* Apartment Mickey David Yasmine



80 m<sup>2</sup> / 6 pers. / Week: 500 > 950€  
Les moulins  
+33 (0)4 50 34 41 30 / +33 (0)6 73 93 99 05  
phiphixx@gmail.com



\*\*\* Le Sabot de Venus Xavier Davergne



39 m<sup>2</sup> / 4 pers. / Week: 480 > 700€  
218 chemin de l'Eterppaz - Vallon d'en haut  
+33 (0)4 50 34 26 81 / +33 (0)6 17 93 62 72  
davergne.xavier@neuf.fr  
www.gitesamoens.com



\*\*\* Gîte Le Bois de Lune Xavier Davergne



39 m<sup>2</sup> / 4 pers. / Week: 480 > 700€  
218 chemin de l'Eterppaz - Vallon d'en haut  
+33 (0)4 50 34 26 81 / +33 (0)6 17 93 62 72  
davergne.xavier@neuf.fr  
www.gitesamoens.com



\* Le Villard Maryline Firinu



50 m<sup>2</sup> / 6 pers. / Week: 360 > 400€  
163 Impasse de La scierie, le Villard  
+33 (0)4 50 34 92 94 / +33 (0)6 17 55 53 91  
samoens-villard@orange.fr



Les terrasses du Berouze Vermeulen Jean et Magali



48 m<sup>2</sup> / 4 pers. / Week: 400 > 600€  
Les terrasses du Berouze, impasse des Terrasses  
+33 (0)7 81 82 79 64  
jeanmagvermeulen@gmail.com



Apartment Patnine David Yasmine



60 m<sup>2</sup> / 6 pers. / Week: 400 > 750€  
Les Drugères  
+33 (0)4 50 34 41 30 / +33 (0)6 73 93 99 05  
phiphixx@gmail.com



Maison Saint-Michel Françoise Pellissier



70 m<sup>2</sup> / 6 pers. / Week: 320 > 950€  
38 route du Grand massif - Les Billets  
+33 (0)4 50 34 98 12 (late in the day or evening)  
+33 (0)6 81 25 55 17 (late in the day or evening)  
jean-paul.pellissier@wanadoo.fr



Villa Tamaris Rastoldo Jean-Pierre



60 m<sup>2</sup> / 4 pers. / Week: 250 > 600€  
318 chemin de sur la ville  
+33 (0)4 50 34 42 85  
l.rastoldo@orange.fr



\*\*\* Chez Pascale - L'Edelweiss Pascale Jay



65 m<sup>2</sup> / 4 pers. / Price: see with the renter  
Plampraz  
+33 (0)4 50 34 97 67 / +33 (0)6 72 80 19 14  
chezpascale@yahoo.fr  
www.gites-de-france-haute-savoie.com



\*\*\* Chez Pascale - Gentiane jaune Pascale Jay



70 m<sup>2</sup> / 8 pers. / Price: see with the renter  
Plampraz  
+33 (0)4 50 34 97 67 / +33 (0)6 72 80 19 14  
chezpascale@yahoo.fr  
www.gites-de-france-haute-savoie.com



Montagne La Table de Fiffine



65 m<sup>2</sup> / 4 pers. / Week: 1000 > 1100€  
612 chemin de la Cour  
+33 (0)4 50 34 10 29  
latabledefiffine@orange.fr  
www.table-fiffine.com



## LIVING ROOM & 3 BEDROOMS

\*\*\*\* La Ferme de Machamp Zaffuto Serge



125 m<sup>2</sup> / 10 pers. / Week: 1000 > 1500€  
295 route de Secouen d'en Bas  
+33 (0)6 37 74 37 41  
serge.zaffuto@gmail.com  
www.machamp.fr



Chalet les Pleignes Barras



65 m<sup>2</sup> / 5 pers. / Price: see with the renter  
Les Pleignes  
+33 (0)4 50 34 40 97  
barrasm@wanadoo.fr





## PRIVATE RENTALS BY OWNER

RESERVATION  
Samoens



**BOOK YOUR STAY DIRECTLY**  
reservation@samoens.com  
+33 (0)4 50 78 62 50  
www.reservation.samoens.com

### La ferme à Laurainne Vincent Laugueux



110 m<sup>2</sup> / 8 pers. / Price: see with the renter  
96 chemin de l'Eterppaz  
+33 (0)6 07 86 81 34  
laugueux.vincent@gmail.com



### Pas au Loup A6/A7 Poirrier Jean Luc



65 m<sup>2</sup> / 8 pers. / Week : 670 > 1250€  
Le Pas au loup  
+33 (0)3 44 39 80 38  
fpoirrier@yahoo.fr



### Annexe SARL La Cour



65 m<sup>2</sup> / 7 pers. / Week : 544 > 869€  
493 chemin de La Cour  
+33 (0)4 50 34 92 96  
Info@dahu1951.com  
www.dahu1951.com



### Bétine 1 Veisy Michel



80 m<sup>2</sup> / 7 à 9 pers. / Price: see with the renter  
Chalet la Bétine  
+33 (0)6 10 71 83 66 / +33 (0)4 50 34 47 12  
info@chezlabetine.com  
www.chezlabetine.com



### Le Criou Gaëtane Granger



105 m<sup>2</sup> / 10 pers. / Week: 1400 > 2200€  
34 route de la Piazz  
+33 (0)6 07 03 10 74  
gg74@orange.fr



### Hameau de Chantemerle - La ferme



415 m<sup>2</sup> / 10 pers. / Price: see with the renter  
Chantemerle  
+33 (0)6 86 37 81 83 / +33 (0)6 76 04 67 90  
clauder@rochet.ch



## LIVING ROOM & 4 BEDROOMS

### \*\*\* Paradisio Bianco Christine



102 m<sup>2</sup> / 10 pers. / Week : 1050 > 1390€  
4 route de Plampraz - Sous le crêt  
+33 (0)6 10 14 93 74  
christine@oratoirechalet.com  
www.locations-chalet-samoens.com



### \*\*\* Olympia Bianco Christine



102 m<sup>2</sup> / 10 pers. / Week : 1050 > 1390€  
4 route de Plampraz  
+33 (0)6 10 14 93 74  
christine@oratoirechalet.com  
www.locations-chalet-samoens.com



### \*\*\* Résidence les Carlînes Alain Couton



103 m<sup>2</sup> / 8 pers. / Price: see with the renter  
85 route des Mouilles  
+33 (0)6 16 27 66 47  
glenaston.samoens@gmail.com



### \*\*\* Alpina - Le Criou Guillotte Sylvie



144 m<sup>2</sup> / 11 pers. / Week : 900 > 2420€  
35 Route du Chevreret  
+33 (0)6 24 41 68 19  
info@chalet-alpina.com  
www.chalet-alpina.com



### \*\* Le Bilbocquet 1 Bocquet



100 m<sup>2</sup> / 6 à 8 pers. / Week : 500 > 700€  
16, rue de la gare  
+33 (0)4 50 36 04 71  
dominique.bocquet@cegetel.net



### \*\* Le Bilbocquet 2 Bocquet



100 m<sup>2</sup> / 8 à 9 pers. / Week : 550 > 750€  
16, rue de la gare  
+33 (0)4 50 36 04 71  
dominique.bocquet@cegetel.net



### Bétine 2 Veisy Michel



100 m<sup>2</sup> / 10 pers. / Price: see with the renter  
Chalet la Bétine  
+33 (0)6 10 71 83 66 / +33 (0)4 50 34 47 12  
info@chezlabetine.com  
www.chezlabetine.com

## LIVING ROOM & 5 BEDROOMS

### \*\*\*\* Le chalet de Vigny - Appartement Le Fenil



150 m<sup>2</sup> / 11 pers. / Week : 1720 > 1920€  
919 route de Vigny  
+33 (0)6 82 91 68 04  
lechaletdevigny@gmail.com  
www.lechaletdevigny-samoens.com

### \*\*\* La Cassina



170 m<sup>2</sup> / 14 pers. / Week : 2500 > 4200€  
425, Route de Plampraz  
+33 (0)6 28 21 32 59  
ferrerestephanie@yahoo.co.uk



## CHALETs



## CHALET STUDIO

### \*\* Petit Chalet des Vallons Lacroix Xavier



35 m<sup>2</sup> / 4 pers. / Week : 420 > 500€  
62 Vallons-d'en-Haut  
+33 (0)6 07 50 14 70 / +33 (0)3 81 57 20 72  
ixel@free.fr  
www.ixel.free.fr



### Hameau de Chantemerle - La Remise Lustig Claire



50 m<sup>2</sup> / 4 pers. / Week : 400 > 900€  
Chantemerle  
+33 (0)6 86 37 81 83 / +33 (0)6 76 04 67 90  
clauder@rochet.ch  
www.chalets-samoens.fr



## 1 BEDROOM CHALET

### \*\* Petit Chalet David Yasmine



45 m<sup>2</sup> / 4 pers. / Week : 400 > 750€  
+33 (0)4 50 34 41 30 / +33 (0)6 73 93 99 05  
phiphixx@gmail.com



## 2 BEDROOMS CHALET

### \*\*\*\* Chalet Le Tavillon Sarl Lou izès



52 m<sup>2</sup> / 4 pers. / Week : 390 > 620€  
218 route des Mouilles  
+33 (0)4 50 34 46 97  
andrepellissierlocation@wanadoo.fr  
www.location-pellissier.com



### \*\*\*\* Le Mazot Alps Accommodation



60 m<sup>2</sup> / 6 pers. / Price: see with the renter  
Le Mazot - 35 clos de Cleveux  
+33 (0)4 50 98 50 56  
info@alpsaccommodation.com  
www.alpsaccommodation.fr



### \*\*\* La Cabine Alps Accommodation



34 m<sup>2</sup> / 4 pers. / Week : 553 > 1932€  
34 clos de Cleveux  
+33 (0)4 50 98 50 56  
info@alpsaccommodation.com  
www.alpsaccommodation.fr



### \*\*\* Chalet Mirabelles Charles Jean Pierre



81 m<sup>2</sup> / 8 pers. / Week : 700 > 1060€  
185 impasse de la Glière des Moulins  
+33 (0)6 99 17 51 93  
chaletmirabelles@gmail.com  
www.chaletmirabelles.com





## PRIVATE RENTALS BY OWNER

### Hameau de Chantemerle - Petite Maison Lustig Claire



70 m<sup>2</sup> / 6 pers. / Week : 500 > 1200€  
Chantemerle  
+33 (0)6 86 37 81 83 / +33 (0)6 76 04 67 90  
claude@rochet.ch  
www.chalets-samoens.fr

### Les Clarines Pellissier Paulette



45 m<sup>2</sup> / 4 pers. / Week : 399 > 599€  
Les Clarines  
+33 (0)4 50 34 43 07  
contact@samoens-location.com  
www.samoens-location.com

### Petit Mouni Pellissier Paulette



45 m<sup>2</sup> / 5 pers. / Week : 360 > 520€  
Le Petit Mouni  
+33 (0)4 50 34 43 07  
contact@samoens-location.com  
www.samoens-location.com

### La Royné Patrice Vaussenat



75 m<sup>2</sup> / Week : 450 > 900€  
387 rue du Bioley  
+33 (0)6 03 20 10 56  
badou74@free.fr

## 3 BEDROOMS CHALET

### \*\*\* Chalet du Sage - La Grange Verrier Marie Noëlle



70 m<sup>2</sup> / 6 pers. / Week : 700 > 800€  
1278 route de Taninges - Les Sages  
+33 (0)4 50 34 99 55 / +33 (0)6 78 36 37 81  
info@chaletdusage.com / verrier.francois@free.fr  
www.chaletdusage.com

### \*\* Chalet Franclair Roeg Marie-Claire



100 m<sup>2</sup> / 6 pers. / Week : 650 > 1250€  
144 route du Coudray  
+31 (0)6 23 99 51 87 / +33(0)7 86 64 09 36  
claire7@dds.nl  
www.chaletfranclair.nl

### Hameau de Chantemerle - Grande Maison Lustig Claire



250 m<sup>2</sup> / 14 pers. / Week : 1 900 > 2 800 €  
Chantemerle  
+33 (0)6 86 37 81 83 / +33 (0)6 76 04 67 90  
claude@rochet.ch  
www.chalets-samoens.fr

### Chalet Lilalpes



105 m<sup>2</sup> / 8 pers. / Week : 800 > 2950€  
357 route des Mouilles  
+33(0)6 16 97 26 37  
c.bretagne@orange.fr  
www.leschaletsdugrandmassif.com

### Grand Mouni Pellissier Paulette



92 m<sup>2</sup> / 6 pers. 3 chambres / Week : 360 > 599€  
Les Vallons  
+33 (0)4 50 34 43 07  
contact@samoens-location.com  
www.samoens-location.com

### Chalet de Bémont Ingrid Colonna



110 m<sup>2</sup> / 8 pers. / Week : 1 500€  
1827 route de Bémont  
+33 (0)6 40 79 51 20  
ingrid.colonna@gmail.com

## 4 BEDROOMS CHALET

### \*\*\*\*\* Chalet Althéa Sarl Floyds



210 m<sup>2</sup> / 10-12 pers. / Week : 750 > 5000€  
84 chemin de sur la ville  
+33 (0)6 88 15 94 79  
chalet.althea@icloud.com  
www.chalet-althea.fr

### \*\*\*\*\* La Ferme des Fontany Mr et Mme Deffaugt



280 m<sup>2</sup> / 12 pers. / Week : 2300 > 3500€  
251 route des Fontaines  
+33 (0)4 50 34 40 72  
resa@neigeetrot.com  
www.chalet-studios-neigeetrot.com/www.neigeetrot.com

### \*\*\*\*\* Chalet Paulette



165 m<sup>2</sup> / 8 pers. / Week : 1190€ > 1330€  
558 route des mouilles  
+33 (0)6 98 18 79 06 31  
sand-staels@orange.fr

### \*\*\*\* La maison du Bérrouze



114 m<sup>2</sup> / 8 pers. / Week : 1000€ > 1500€  
44 route du Lac aux dames  
+33 (0)6 37 48 28 37  
durier.veronique@orange.fr

### \*\*\*\* La Maison du Bourg



150 m<sup>2</sup> / 10 pers. / Week : 1800€ > 2400€  
15 rue du château  
+33 (0)6 82 26 96 70  
anne.colonna@wanadoo.fr

### \*\*\*\* Le Dahu Sarl Lou Izès



160 m<sup>2</sup> / 11 pers. / Week : 1100 > 1750€  
Chalet le Dahu - 106 chemin du Mouneau  
+33 40(0) 50 34 46 97  
andrepellissierlocation@wanadoo.fr  
www.location-pellissier.com

### \*\*\* Les Epilobes Verignon Marie-Pierre



98 m<sup>2</sup> / 8 pers. / Week : 690 > 990€  
104 impasse du Farbelet  
+33 (0)4 50 34 15 98 / +33 (0)6 84 23 90 75  
lesepilobes@free.fr  
www.lesepilobes.free.fr / www.chaletsamoens.fr

### \*\*\*\* Chalet Toubkal Alps Accommodation



140 m<sup>2</sup> / 10 pers. / Week : 1600 > 5600€  
528 route des Péterets  
+33 (0)4 50 98 50 56  
info@alpsaccommodation.com  
www.alpsaccommodation.fr

### Chalet Yoda



115 m<sup>2</sup> - 8 pers. / Week : 1850€ > 2450€  
273 Route de Mathonex  
jdecharriere@gmail.com

### SARL Les Mouilles



101 m<sup>2</sup> / 10 pers. / Week : 2000 > 2200€  
247, chemin des mouilles d'en bas  
+33(0)6 71 00 19 12  
jcduprat@wanadoo.fr

### Le Refuge Chalet 1 Jacky Favre



80 m<sup>2</sup> / 4 pers. / Week : 600€ > 770€  
22 impasse du Char Maury  
+33 (0)6 98 13 76 55  
hotelbergerie@gmail.com

## 5 BEDROOMS CHALET

### \*\*\*\* Chalet Arnica - Les Chalets d'Anais



180 m<sup>2</sup> / 12 pers. / Price: see with the renter  
42 impasse de la Planche  
+33 (0)4 50 34 13 98  
contact@leschaletsdanais.fr  
www.leschaletsdanais.com

### \*\*\*\* Chalet Moccand Alps Accommodation



190 m<sup>2</sup> / 12 pers. / Price: see with the renter  
Chef lieu  
+33 (0)4 50 98 50 56  
info@alpsaccommodation.com  
www.alpsaccommodation.fr

### \*\*\*\* Duplex Les Vallons Cathan Sébastien et Dukiel Karine



110 m<sup>2</sup> / 10 pers. / Week : 1500 > 3600€  
864 route de Sixt  
+41(0)798274398 / +41(0)788828534 / +33(0)6 82 64 48 56  
duplexvallons@gmail.com

### \*\*\* Chalet La Remise Divignat Pascal



150 m<sup>2</sup> / 12 pers. / Week : 700 > 2500€  
520 route de Vallons-d'en-Haut  
+33 (0)4 57 44 56 57 / +33 (0)6 80 05 51 97  
divignat@cegetel.net  
www.vallons.com

### \*\*\* Grand Chalet des Vallons Lacroix Xavier



130 m<sup>2</sup> / 12 pers. / Week : 1050 > 1450€  
62 route des Vallons  
+33 (0)3 81 57 20 72  
ixel@free.fr  
www.chalet.free.fr

All photos and descriptions of our flats and chalets are available on our website [www.samoens.com](http://www.samoens.com), category «my accommodation», heading «holiday rentals».

After a visit, the classified furnished accommodation respects the new standards defined in 2009 by the legislator. The classification scale goes from 1 to 5 stars (\*). Unclassified rentals (NC) have not been visited. The descriptions and information are provided by the owner and are not binding on the tourist office. The tourist tax is collected by the landlord and paid to the municipality for the improvement of the night corresponds to the price of the tourist reception of the village.

It's calculated per night, per person: 5 stars (\*): 3,00€.  
4 stars (\*): 2,00€.  
3 stars (\*): 1,20€.  
2 stars (\*): 0,80€ per night  
1 star (\*): 0,70€.  
For all accommodation awaiting classification, with the exception of the above-mentioned categories of accommodation, the rate applicable per person and per night is 5% of the cost per person of the night within the limit of the highest rate adopted by the local authority or, if it is lower than the latter, the maximum rate applicable to 4-star tourist hotels. The cost of the night corresponds to the price of the accommodation service excluding tax.





## PRIVATE RENTALS BY OWNER

### \*\*\* Chalet du Sage - La Ferme Verrier Marie Noëlle



117 m<sup>2</sup> / 12 pers. / Week : 900 > 1250€  
1278 route de Taninges - Les Sages  
+33 (0)4 50 34 99 55 / +33 (0)6 78 36 37 81  
info@chaletdusage.com / verrier.francois@free.fr  
www.chaletdusage.com



### \*\*\* Chalet Pym Mr et Mme Ruby



10 pers. / Week : 1800 > 2750€  
150, Impasse des Eaux Froides  
+33 (0)6 07 80 95 34  
chaletpym@gmail.com



### Chalet la Ferme du Ciel Alex & Lucie Shackleton



600 m<sup>2</sup> / 16 pers. / Price: see with the renter  
Mathonex  
+33 (0)4 50 58 44 57 / +33 (0)6 61 29 59 81  
info@fermeduciel.com  
www.fermeduciel.com



## 6 BEDROOMS CHALET

### \*\*\*\* Chalet Champenoise



238 m<sup>2</sup> / 14 pers. / Week : 2520 > 3800€  
568 route de la Plaz  
+33 (0)6 71 20 59 52  
rioncarine@hotmail.fr



### Chalet Grand Massif Guiglion



200 m<sup>2</sup> / 16 pers. / Price: see with the renter  
Les Vaisys  
+33 (0)6 17 89 82 39  
contact@chalet-grandmassif.com  
www.chalet-grandmassif.com



### Chalet Perla dé nà Tarot



208 m<sup>2</sup> / 14 pers. / Price: see with the renter  
Route des Saix - Vercland  
+33 (0)4 50 53 60 99 / +33 (0)6 71 05 79 39  
contact@chalet-perladena.fr  
www.chalet-perladena.fr



## 7 BEDROOMS CHALET

### \*\*\*\* Chalet La Savoyarde Wastiaux Philippe et Fanny



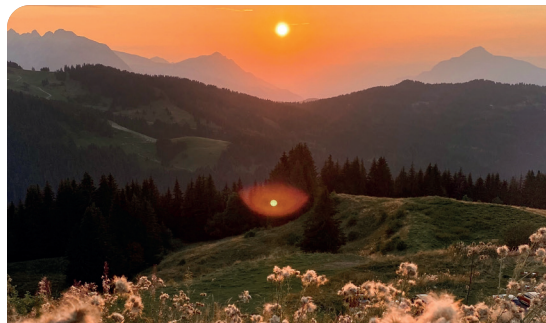
237 m<sup>2</sup> / 18 pers. / Week : 2250 > 4300€  
145 route des Mouilles  
+33 (0)6 07 14 94 24  
contact@chaletsavoyarde.fr  
www.chaletsavoyarde.fr



### \*\*\*\* Le chalet dans les étoiles



300 m<sup>2</sup> / 14 pers. / Week : 2500 > 3200€  
1304 route de l'Etelley  
+33 (0)6 84 58 10 75  
chaletdanslesetoiles@gmail.com  
www.chaletdanslesetoiles.com



## Samoëns 1600

## STUDIO

### \*\* SCI Axaumyr



23 m<sup>2</sup> / 3 personnes / Week : 190 > 690€  
Les Cimes - Plateau des Saix  
+33 (0)6 98 37 70 00  
myriamne.ladouble@wanadoo.fr



### \* Arve et Giffre A26 Yves Rusterholtz



24 m<sup>2</sup> / 5 pers. / Week : 150 > 500€  
Plateau des Saix  
+33 (0)6 62 34 25 83  
yves.rusterholtz@sfr.fr



### \* Les Cimes 409



27 m<sup>2</sup> / 4 pers. / Week : 560 > 735€  
Les Cimes 409 - Plateau des Saix  
+33 (0)7 62 74 74 53  
julieboussard@gmail.com



### Lignon Claude



19 m<sup>2</sup> / 4 pers. / Week : 180 > 490€  
Les Cimes  
+33 (0)6 84 64 90 06  
claudiejc38@aol.com



### Les Cimes 203 Perrin



19 m<sup>2</sup> / 3-4 pers. / Week : 320 > 555€  
Les Cimes 203  
+33 (0)6 89 73 48 57 / +33 (0)3 84 46 05 79  
gillessperrin70@gmail.com



### Studio Les Cimes Christine Courtois



19 m<sup>2</sup> / 5 pers. / Week : 180 > 355€  
Plateau des Saix  
+33 (0)6 48 56 89 50  
christ1807@yahoo.fr



## LIVING ROOM & 1 BEDROOM

### \* Les Cimes 228 Dotte Christian



30 m<sup>2</sup> / 6 pers. / Week : 200 > 250€  
228, Résidence Les Cimes  
+33 (0)9 86 69 42 40  
christian.dotte@orange.fr



### Celine et Yves Donat Magnin



30 m<sup>2</sup> / 4 pers. / Week : 425 > 675€  
658 plateau des Saix  
+33 (0)6 62 17 94 59  
macezано@gmail.com



### Dupont Maryvonne



25 m<sup>2</sup> / 5 pers. / Week : 150 > 570€  
Les Cimes 202 - Plateau des Saix  
+33 (0)2 40 34 72 51  
maryvonne.dupont@dartybox.com



## LIVING ROOM & 2 BEDROOMS

### Les Saix



150m<sup>2</sup> / 14 pers. / Week : 488 > 1085€  
1096 plateau des Saix  
+33 (0)6 49 66 10 27  
lessaix74@gmail.com



## 2 BEDROOMS CHALET

### \*\*\* Le Chalet d'Eqloo Rewega Michel Ange



100 m<sup>2</sup> / 10 pers. / Week : 800 > 1200€  
920 plateau des Saix  
+33 (0)6 09 80 55 29  
chalet.eqloo@orange.fr



### \*\* Mickael Rousseau



31 m<sup>2</sup> / 6 pers. / Price: see with the renter  
Le Giffre plateau des Saix  
+33 (0)6 85 55 31 64  
mikoair2@wanadoo.fr



## 4 BEDROOMS CHALET

### \*\* Chalet Katz Katz Johana



70 m<sup>2</sup> / 6 pers. / Week : 300 > 1200€  
Les Saix d'en Bas  
+33 (0)6 86 43 64 65  
chaletkatz@gmail.com  
www.location-samoens.com





## THE SUMMER EVENTS

**VÉLO VERT FESTIVAL**  
June 2<sup>nd</sup>, 3<sup>rd</sup> and 4<sup>th</sup>

**ULTRA TRAIL®  
FROM HAUT-GIFFRE**  
June 16<sup>th</sup> to 18<sup>th</sup>

**WORLD CUP RUGBY  
TROPHY**  
June 23<sup>rd</sup> to 24<sup>th</sup>

**SAMOËNS  
AMERICAN  
FESTIVAL**  
June 29<sup>th</sup> to July 2<sup>nd</sup>

**TOUR DE FRANCE  
STAGE**  
July 9<sup>th</sup>

**LYRIC  
FESTIVAL**  
July 15<sup>th</sup> to 31<sup>st</sup>

**TOUR DE FRANCE  
PASSAGE**  
July 15<sup>th</sup>

**ADOPTÉ  
UN COL**  
July 23<sup>rd</sup>

**MOUNTAIN GUIDES  
PARTY**  
August 6<sup>th</sup>

**KILOMÈTRE  
VERTICAL  
DU CRIOU**  
August 13<sup>th</sup>

**WELL-BEING  
MEETINGS**  
September 22<sup>nd</sup> to 24<sup>th</sup>



## COMING TO SAMOËNS

Opening hours of the  
Samoëns Tourist Office  
during the summer season

**Inter season**  
(mid April - mid May) :  
from Tuesday to Saturday  
from 9am to 12pm and from  
2pm to 6pm

**Sunday opening :**  
Contact the Tourist Office for  
information

**Season (early June - late August):**  
every day - from 9am to  
12pm and from 2.30pm to  
6.30pm



### BY CAR

Motorway A40 Geneva / Chamonix  
Exit Cluses - Scionzier (n°18),  
Samoëns at 20 mn  
Exit Bonneville (n°17)  
Road conditions : Haute-Savoie  
+33 (0)4 50 33 20 74  
[www.inforoute74.fr](http://www.inforoute74.fr)

### BY TRAIN

Arrival at the SNCF train station in  
Cluses (20km), Geneva (50km) or  
Bellegarde (70km) Direct TGV lines  
from major cities (at weekends).  
SNCF information: [sncf.com](http://sncf.com)  
Liaison by bus [www.altibus.com](http://www.altibus.com)  
Liaison by taxi (see list opposite) or  
car hire.

### BY BUS

Connection to Samoëns from:  
Cluses SNCF station at 20 km  
Annemasse SNCF station at 45 km  
More information on your  
timetable: [www.altibus.com](http://www.altibus.com)  
+33 (0)4 79 68 32 96



### BY PLANE

**Geneva Cointrin Airport**  
+33 (0)0 41 22 799 31 11  
[www.gva.ch](http://www.gva.ch)  
**Lyon saint-Exupéry airport**  
+33 (0)8 26 80 08 26  
[www.lyonaeroports.com](http://www.lyonaeroports.com)

### TAXI

**Taxi David**  
La falconnière  
+33 (0)6 62 25 39 43  
[taxi.david.samoens@gmail.com](mailto:taxi.david.samoens@gmail.com)  
[www.taxi-david.net](http://www.taxi-david.net)

### CARRIERS

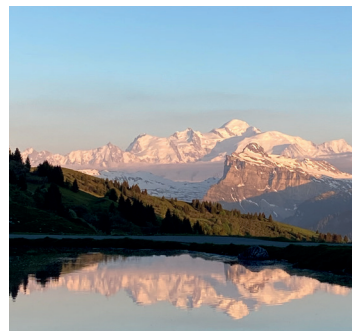
**Alps Transfert**  
Avenue des Loisirs  
+33 (0)6 11 30 30 15  
[alpstransfert@gmail.com](mailto:alpstransfert@gmail.com)  
[www.alpstransfert.com](http://www.alpstransfert.com)

### Autocars S.A.T

+33 (0)4 50 38 42 08  
[www.sat-autocars.com](http://www.sat-autocars.com)

### Go Massif

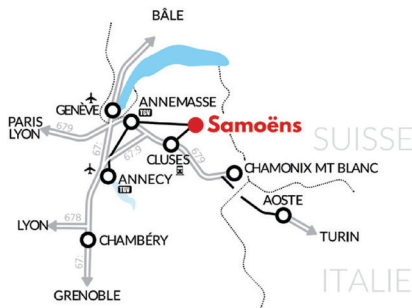
+33 (0)4 50 89 35 68  
[info@gomassif.com](mailto:info@gomassif.com)  
[www.gomassif.fr](http://www.gomassif.fr)



Continue the adventure this winter!



CALCULATE YOUR ITINERARY IN THE  
"COMING TO SAMOËNS" SECTION  
[www.samoens.com](http://www.samoens.com)



Lyon : 200 km  
Paris : 600 km  
London : 934 km  
Geneva : 57 km  
Berlin : 1 198 km  
Rome : 873 km  
Brussels : 847 km

Decimal longitude : 6,72380447  
Decimal latitude : 46,08278662

Samoëns

SAMOËNS  
TOURIST OFFICE  
+33 (0)4 50 34 40 28  
[infos@samoens.com](mailto:infos@samoens.com)  
[www.samoens.com](http://www.samoens.com)

Follow us  
ON SOCIAL NETWORKS



@samoens\_official #samoens



SAVOIE  
MONT  
BLANC

